

**Perfection  
has never been closer...**

**Are you ready?**



*Michelangelo*

**M**  
ANGELO  
ceramica

Michelangelo Buonarroti was a great artist and sculptor who famously said "i saw the angel in the marble and carved until I set him free."

We are an Italian/Iranian brand that tries to make a bridge between the two cultures. The tastes of art, from the east and west by gathering their best architects, interior designers and tile experts.

Our designs are inspired by natural surfaces and textures, classic and contemporary arts, cultural symbols and latest trends. Our mission is to increase the standards of the market by producing innovative, high quality and elegant ceramic tiles to please our customers and make living spaces practical and elegant.

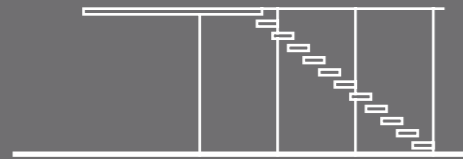
Michelangelo Buonarroti era un grande artista e scultore che pronunciò una celebre frase "ho visto un angelo nel blocco di marmo e l'ho scolpito fino a quando non è stato libero".

Angelo Ceramica nasce da una collaborazione italiano iraniana nel tentativo di costruire un ponte tra le due culture, cercando di cogliere il gusto dell'arte dall'est all'ovest radunando le migliori architetture, i migliori interior designers e le migliori esperienze ceramiche. I nostri design sono ispirati da superfici naturali, arti classiche e contemporane, dalle rispettive tradizioni culturali e dagli ultimi trend del mercato.

La nostra missione è elevare gli standard qualitativi del mercato, producendo in modo innovativo, con attenzione alla eleganza ceramica nel rispetto della migliore qualità possibile, in modo da soddisfare i nostri clienti per creare ambienti pratici ed eleganti.

# APPLICATION

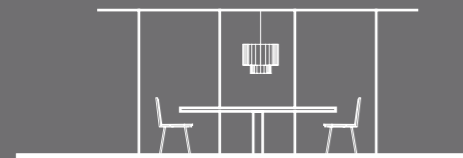
# Size



Floors & Stairs  
Pavimenti e Scale



Shelve & Console  
Ripiani e Consolle



Interior Design  
Design di Interni



Sliding Walls  
Pareti Scorrevoli



Residential  
Residenziale



Office  
Ufficio



Shop & Malls  
Negozio e centri commerciali



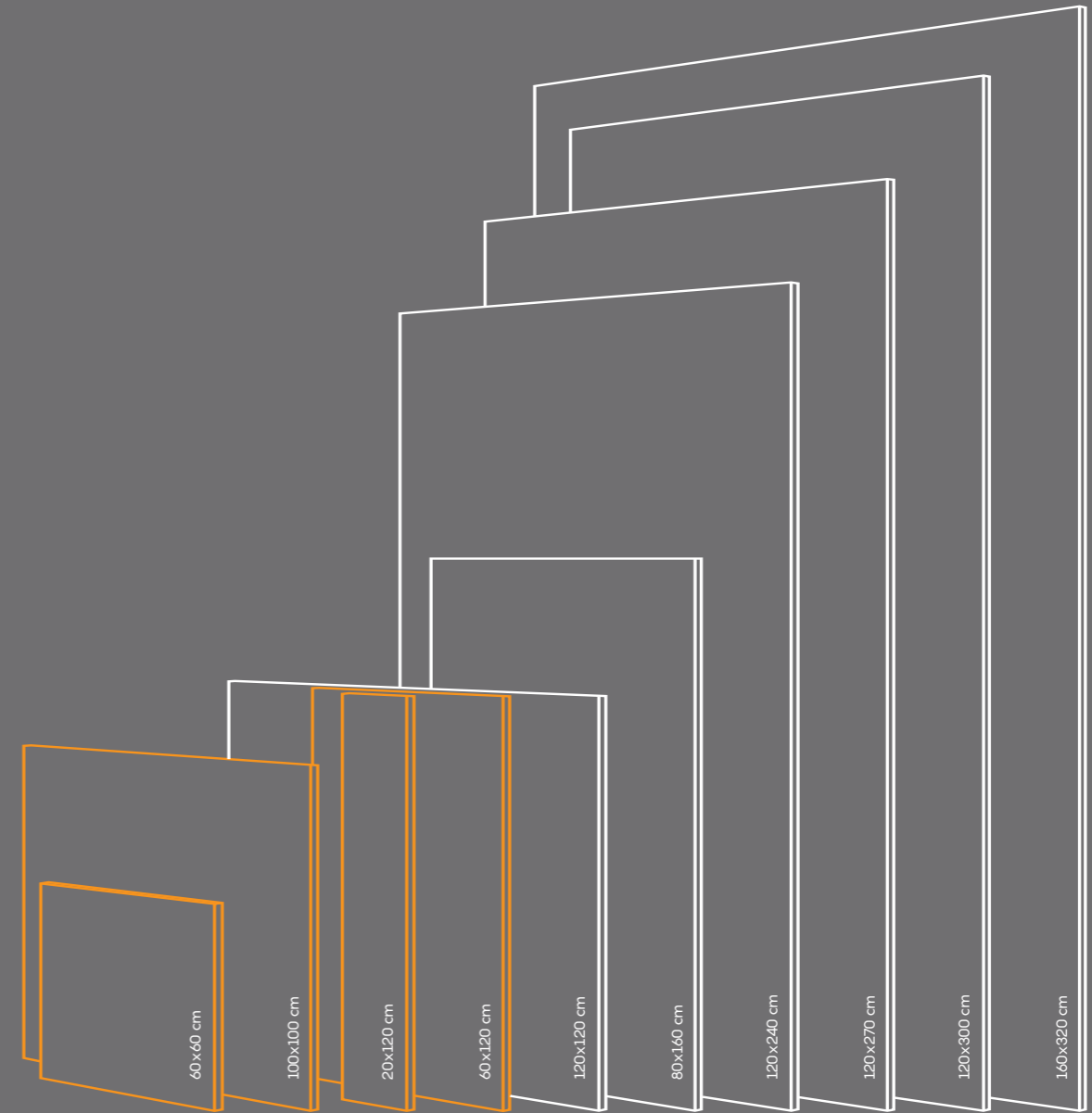
Transportation  
Trasporti



Restaurant  
Ristorante



Hotel  
Hotel



# COLLECTION



<b>CEMENT</b>	18
ETERNO	20
CEMENTO	28
VELLUTO	34
CASSERO	44
LOFT	50
BETONITE	56
VALENTINO	62

<b>MARBLE</b>	68
TIFFANY	70
CALACATTA   PALAZZO	74
CALACATTA   CARMEN	76
TERRABIANCA	82
OPAL   MONTE BIANCO	86
DELPHUS	90
CANYON	94
ONYX	98
ALPI	102
BRILLANTE	106



# COLLECTION



<b>WOOD &amp; FABRIC</b>	110
TRAME	112
DECAPÉ	114
VINTAGE WOOD	118

<b>STONE</b>	126
VOLCAMONICA	128
MARQUINA	134

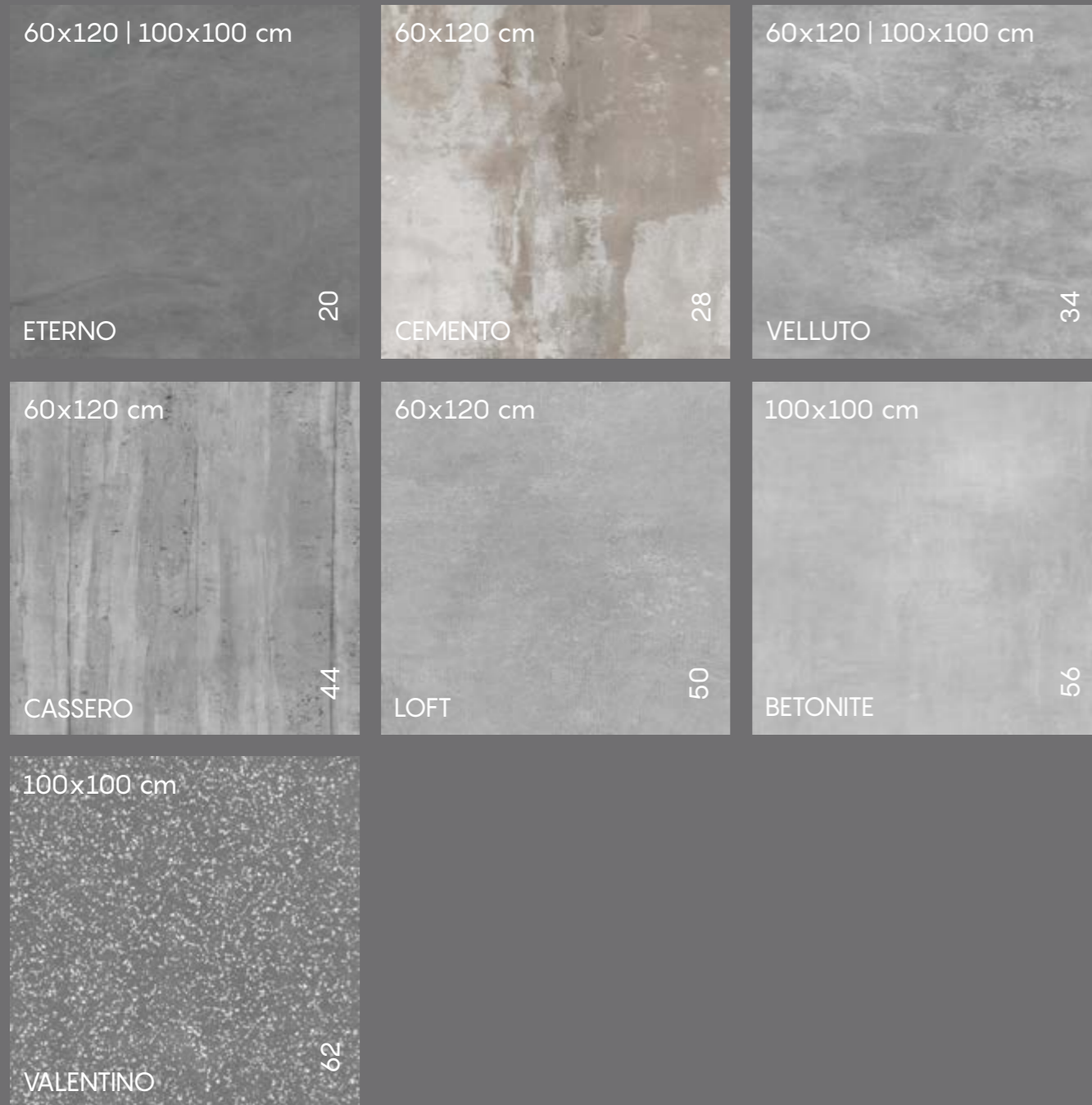
<b>FASHION STONE</b>	138
PIRITE ORO	140
INDUSTRIA	144
BELVEDERE	148
PLATINIUM	154
TRENTINO	160
PRESIDENT	166
GAYA	172
IRISH GREEN	178
MAGMA GOLD	184



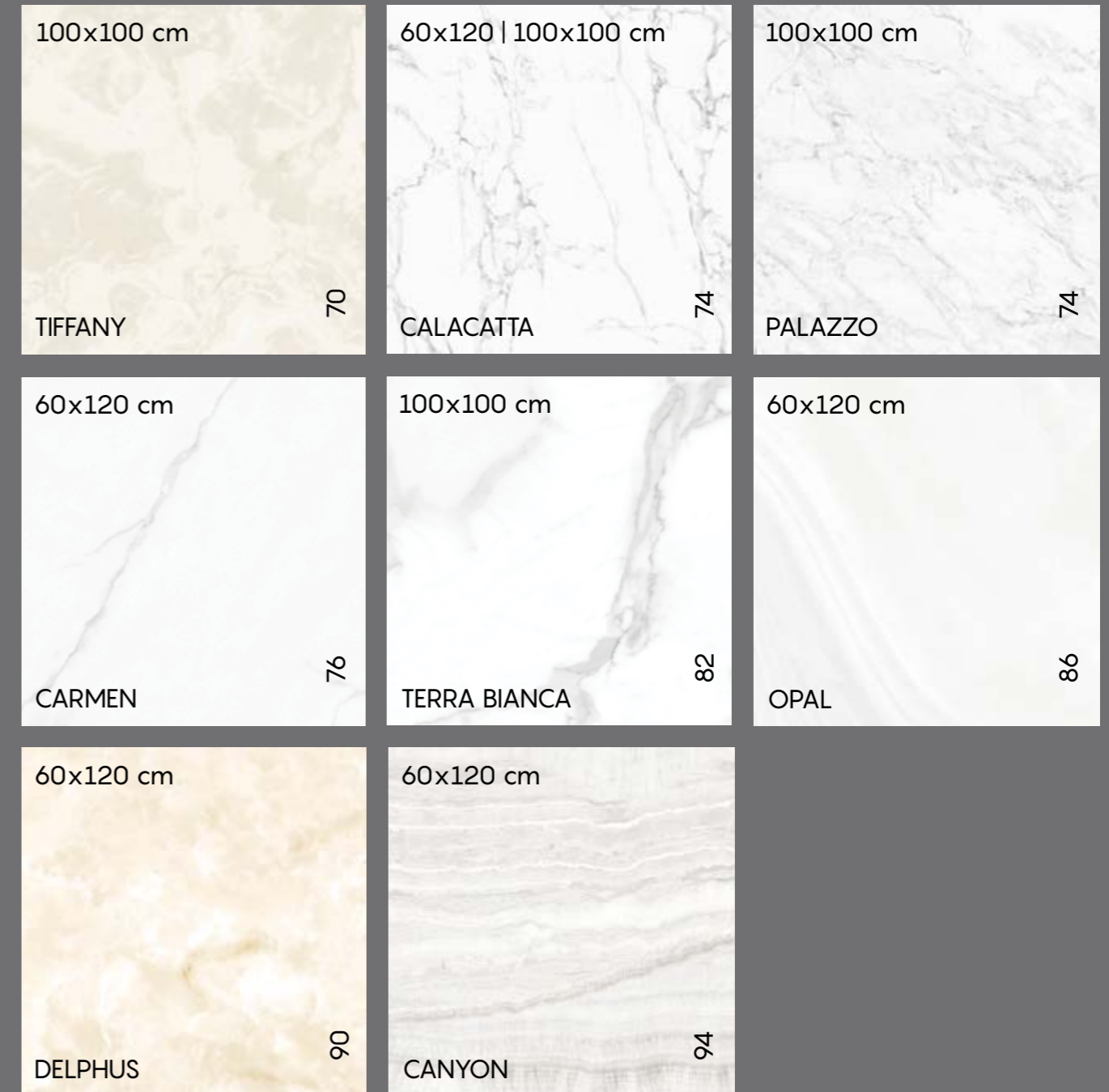
<b>NEW COLLECTION</b>	190
STORM	192
GRIS	196



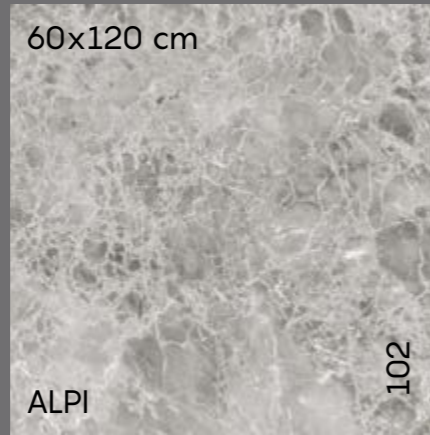
# CEMENT COLLECTION



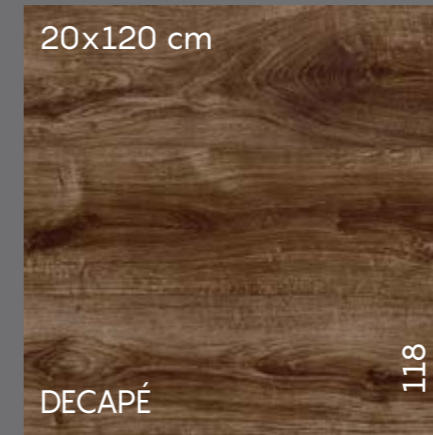
# MARBLE COLLECTION



## MARBLE COLLECTION

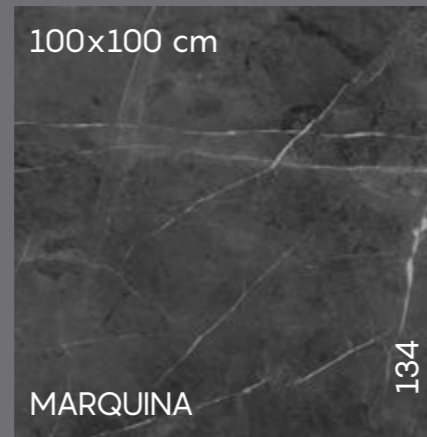


## WOOD & FABRIC COLLECTION

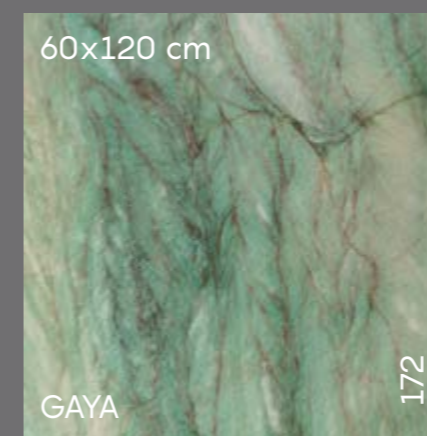
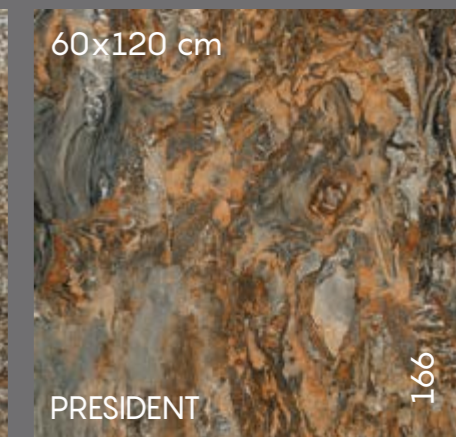
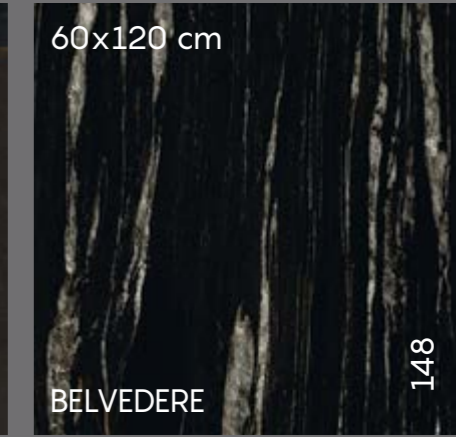




# STONE COLLECTION



# FASHION STONE COLLECTION







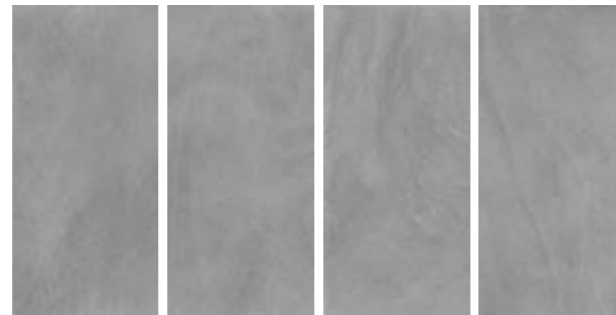


CEMENT

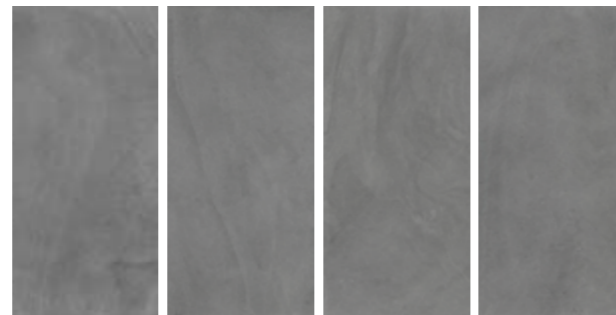
ETERNO	20
CEMENTO	28
VELLUTO	34
CASSERO	44
LOFT	50
BETONITE	56
VALENTINO	62

# ETERNO

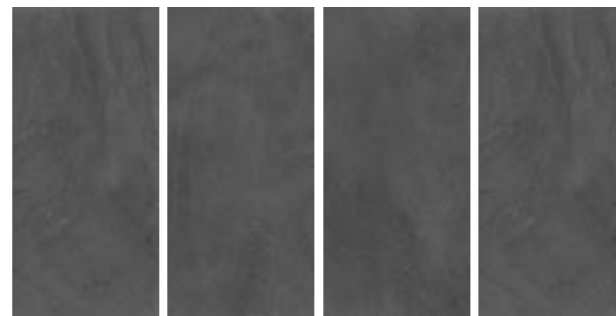
60x120cm



Light Grey  
Matt - Code: 9266



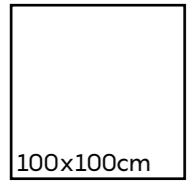
Grey  
Matt - Code: 9267



Dark Grey  
Matt - Code: 9268



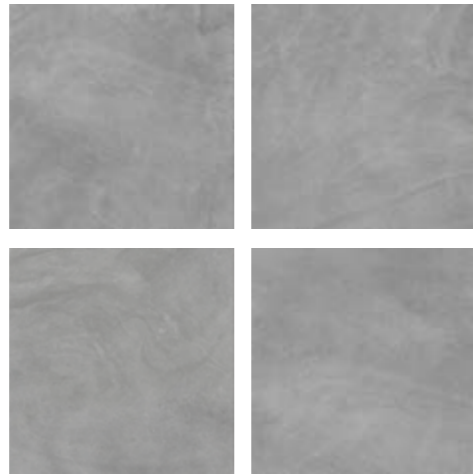
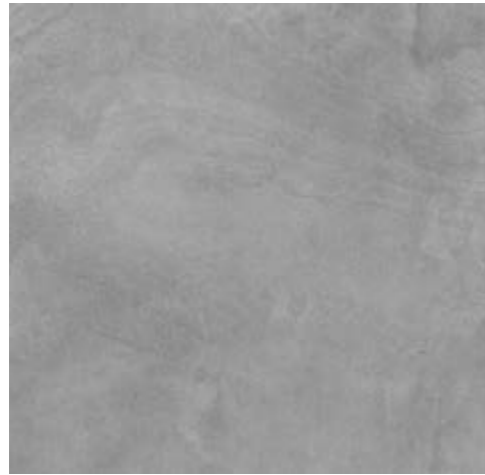
# ETERNO



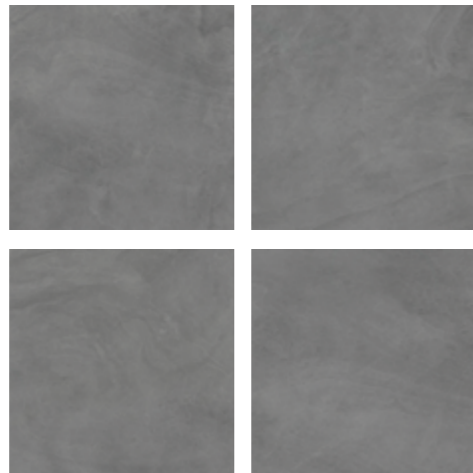
100x100cm



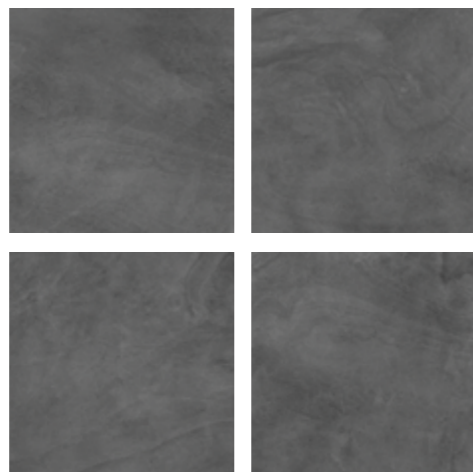
10 mm



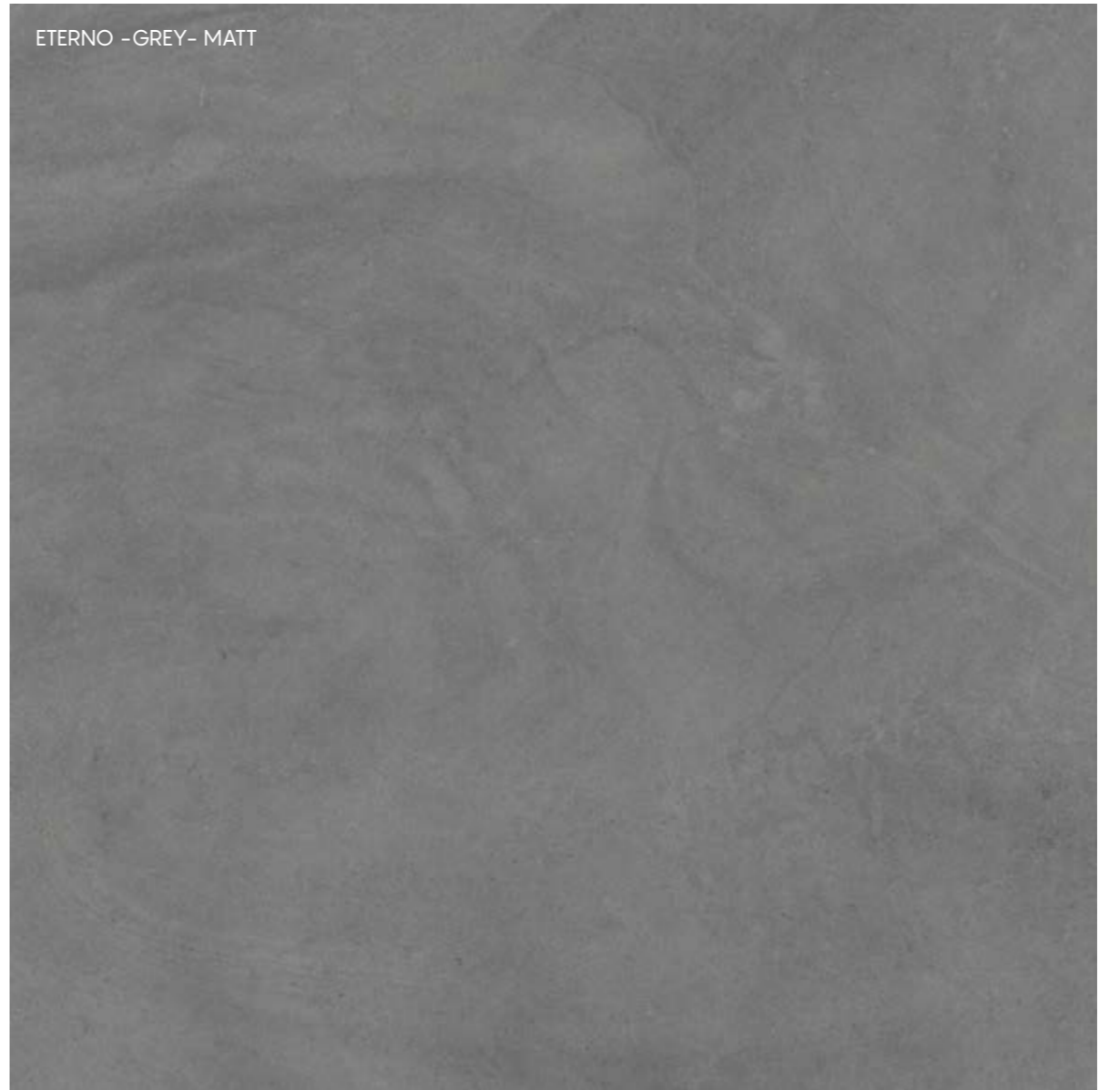
Light Grey  
Matt - Code: 9320



Grey  
Matt - Code: 9321



Dark Grey  
Matt - Code: 9322



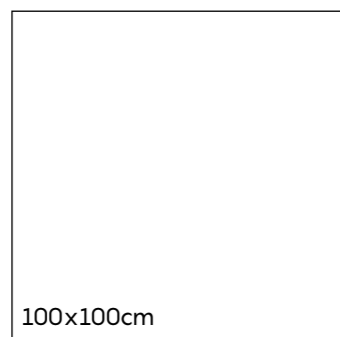
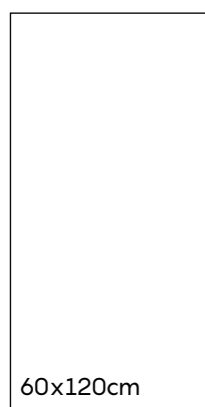
ETERNO - GREY - MATT



# ETERNO

ETERNO gives style and simplicity to the design with an impression of peace and good order at every step. It's perfect for fulfilling the potential of many locations and contexts from indoors to outdoors. The forceful style of the concrete look gives character to a living-room or the main dining-room of a restaurant, and denotes cleanliness and modernity.

La collezione Betonite assicura stile e semplicità agli spazi suscitando idee di pace e ordine a ogni passo. Si tratta di una collezione perfetta per riempire ambienti interni ed esterni all'edificio. Lo stile potente del cemento dona carattere agli ambienti di una residenza, alle sale di un ristorante e rimarca pulizia e modernità allo stesso tempo.



60x120cm

100x100cm





# CEMENTO

60x120cm



Light  
Matt - Code: 9120  
Polished - Code: 9135



Dark  
Polished - Code: 9137

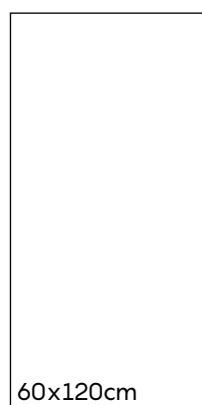




# CEMENTO

The CEMENTO collection is inspired by new urban contexts and contemporary architectural trends. Combinations of cement and concrete, the patina of rusted metals with alternating chiaroscuro hues with vintage moods that are ideal for giving residential spaces a personal touch; or for creating turnkey solutions for commercial applications for contemporary areas with a dynamic characters. The tiles come in two sizes (60x120 , 30x90) and shades in matt alternative and 60x120 in 3 shades of glossy reflection.

La collezione cemento è ispirata dai nuovi contesti urbani e dai trend architettonici contemporanei. Combinazioni di cemento e calcestruzzo, la patina dei metalli arrugginiti con un'alternanza di tonalità chiaroscuro con mood vitage che sono ideali per dare agli spazi residenziali un tocco personale; o per creare soluzioni chiavi in mano per applicazioni commerciali per aree contemporanee con caratteri dinamici. Vi sono due misure di piastrelle (60x120, 30x90) e tre sfumature opache alternative e 60x120 in 3 sfumature lucide.



60x120cm









# VELLUTO

60x120cm



Light Grey  
Matt - Code: 9144  
Polished - Code: 9154



Light Grey  
Ardesia- Code: 9149



Grey  
Matt - Code: 9143  
Polished - code: 9153



Grey  
Ardesia- Code: 9148



Dark Grey  
Matt - Code: 9142  
Polished - Code: 9152



Dark Grey  
Ardesia- Code: 9147



Brown  
Matt - Code: 9140  
Polished - Code: 9150



Brown  
Ardesia- Code: 9145

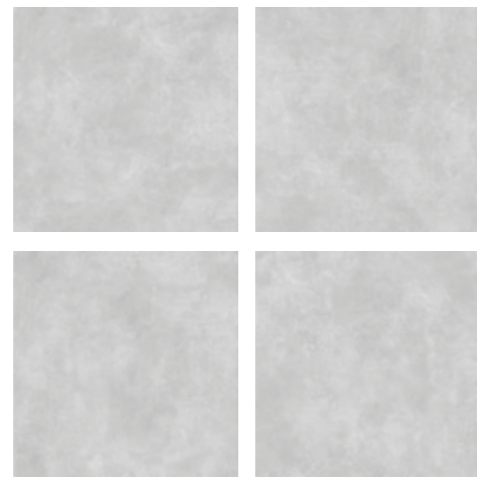
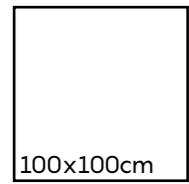


Beige  
Matt - Code: 9253  
Polished - Code: 9254

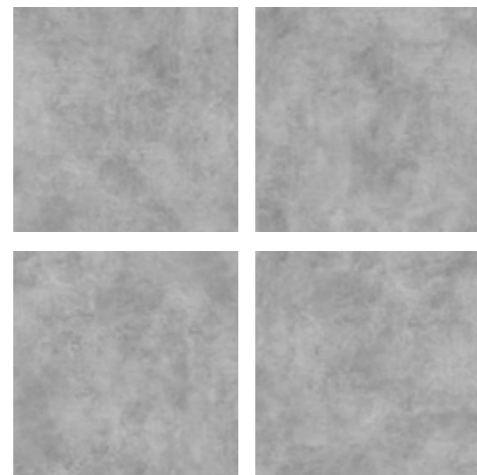


Beige  
Ardesia- Code: 9255

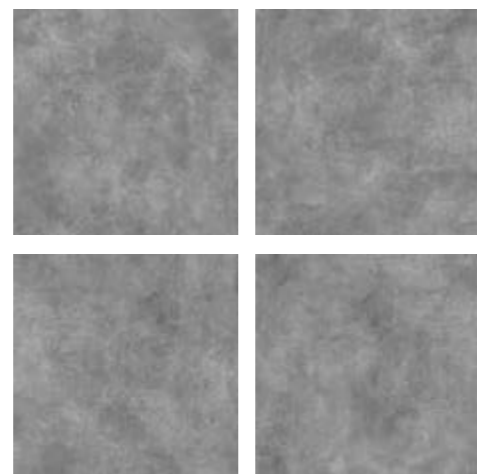
# VELLUTO



Light Grey  
Matt - Code: 9144



Grey  
Matt - Code: 9143



Dark Grey  
Matt - Code: 9142





VELLUTO - GREY - MATT



VELLUTO ARDESIA - GREY

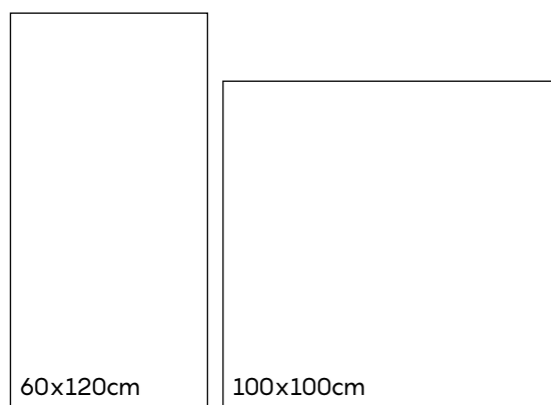




# VELLUTO

The hallmark feature of the collection is an original sensation of softness that helps establish a smooth, continuous surface on which matt and glossy reflections alternate. VELLUTO is available in five innovation color options, these 60x120 rectified tiles accentuate high tech modernism through ceramic interpretation. You can have them in Ardesia (slate) option as well. This collection is suitable both for the most sophisticated of residential interiors and for modern prestigious commercial premises.

La caratteristica principale della collezione è un'originale sensazione di delicatezza che aiuta ad instaurare una superficie liscia e continua dove i riflessi opachi e lucidi si alternano. VELLUTO è disponibile in 5 colori opzionali innovativi queste piastrelle 60x120 rettificate accentuano il modernismo high-tech tramite un'interpretazione della ceramica. Sono inoltre disponibili in Ardesia. Questa collezione è adatta sia per la maggiorparte degli interni residenziali che per prestigiosi locali commerciali.





VELLUTO





# CASSERO



Light Grey  
Matt - Code: 9226



Grey  
Matt - Code: 9225



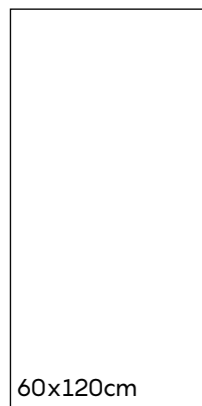
Dark Grey  
Matt - Code: 9224



# CASSERO

Sometimes the roughness of public works can become an extremely original element for ceramic decorations. In this case, Cassero resumed the reinforced concrete structures in their most shipbuilding aspect with the importance of the imprints left by the wood that contains it. This ceramic solution is used mainly in the façade to achieve a very modern and timeless design.

A volte la grossolanità delle opere pubbliche può diventare un elemento estremamente originale per decorazioni ceramiche. In questo caso Cassero riprende le strutture di cemento armato nel loro aspetto più cantieristico con la rilevanza delle impronte lasciate dal legno che lo contiene. In questo modo la possibilità di utilizzo soprattutto a facciata rende questa soluzione ceramica molto attuale e moderna e sicuramente mai banale.







Cassero - Grey - Matt



Cassero - Light Grey - Matt

# LOFT



Light Grey  
Matt - Code: 9243



Light Grey - Rotaia  
Matt - Code: 9249



Grey  
Matt - Code: 9242



Grey - Rotaia  
Matt - Code: 9248

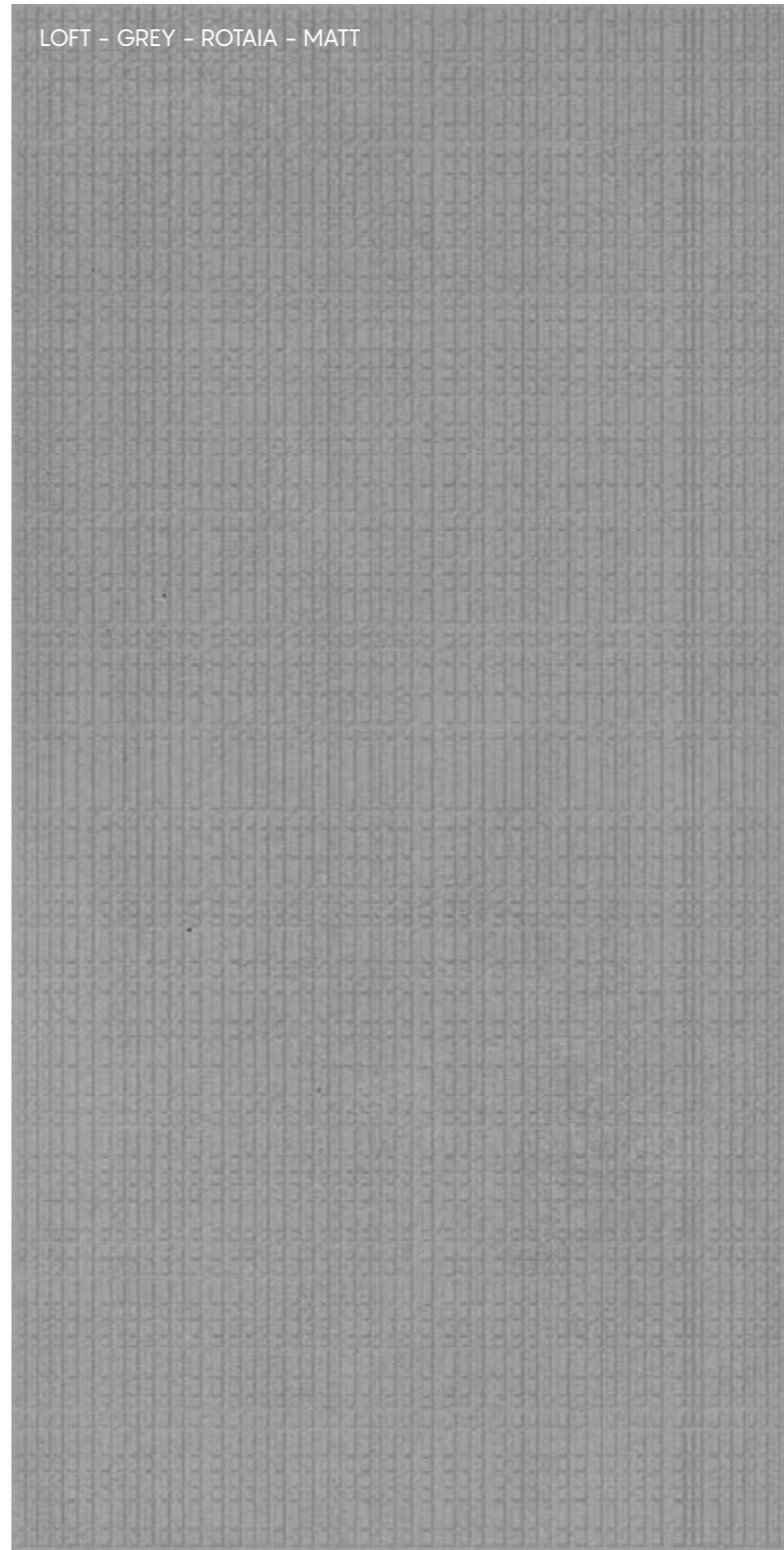


Dark Grey  
Matt - Code: 9241



Dark Grey - Rotaia  
Matt - Code: 9247

LOFT - GREY - ROTAIA - MATT

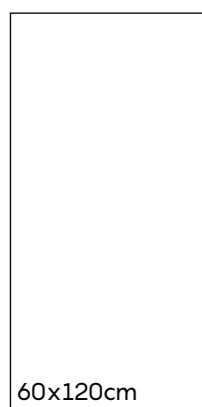




# LOFT

The cement from poor industrial material as it is transformed into this collection as a sophisticated and unpredictable material. The differences in the structure and color shades of this product, give the cement a more suitable look for the realization of modern environments. The relevance of this product and its complexity make it suitable for commercial, as well as trendy residential uses

Il cemento da materiale povero e industriale come è si trasforma in questa collezione come materiale sofisticato e imprevedibile. Le differenze nella struttura e nelle sfumature cromatiche di questo prodotto, conferiscono al cemento una veste più idonea alla realizzazione di ambienti moderni sempre più esigenti. L'attualità di questo prodotto e la sua complessità lo rendono adatto per utilizzazioni commerciali, ma anche residenziali di tendenza.

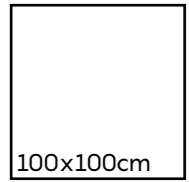








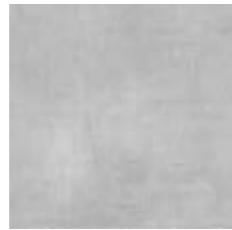
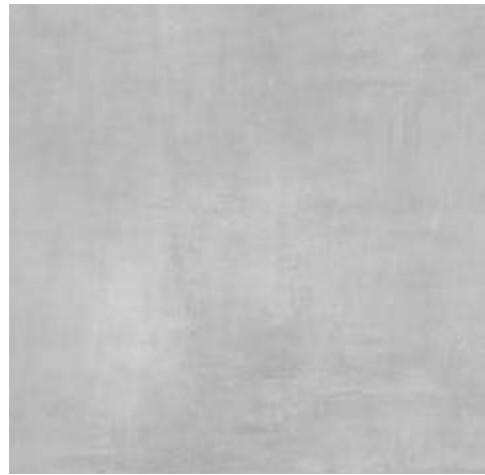
# BETONITE



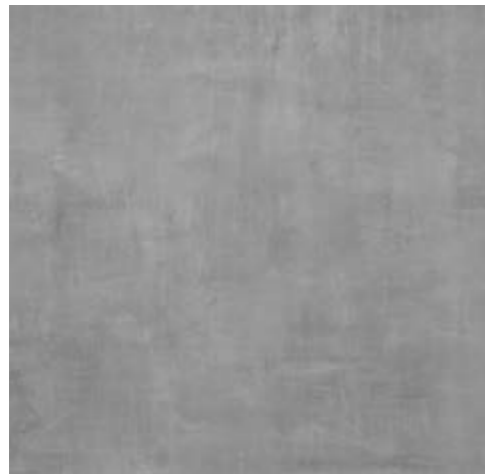
100x100cm



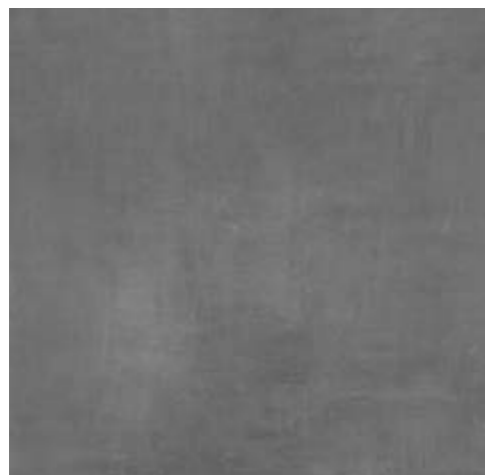
10 mm



Light Grey  
Matt - Code: 9285



Grey  
Matt - Code: 9286



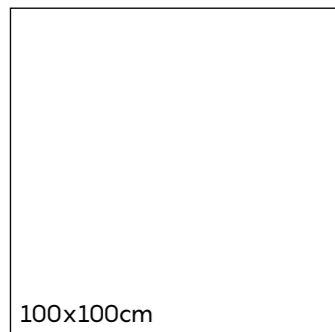
Dark Grey  
Matt - Code: 9287



# BETONITE

BETONITE gives style and simplicity to the design with an impression of peace and good order at every step. It's perfect for fulfilling the potential of many locations and contexts from indoors to outdoors. The forceful style of the concrete look gives character to a living-room or the main dining-room of a restaurant, and denotes cleanliness and modernity. The surface texture of concrete-effect porcelain stoneware tiles is definitely one of the most versatile, and can provide perfect continuity between different areas.

La collezione Betonite assicura stile e semplicità agli spazi suscitando idee di pace e ordine a ogni passo. Si tratta di una collezione perfetta per riempire ambienti interni ed esterni all'edificio. Lo stile potente del cemento dona carattere agli ambienti di una residenza, alle sale di un ristorante e rimarca pulizia e modernità allo stesso tempo. La superficie di questo cemento ceramico è indubbiamente uno dei più versatili e provvede a donare continuità tra differenti aree tra loro.





BETONITE



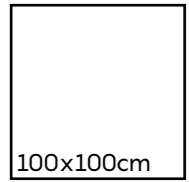
Betonite - Grey - Matt



Betonite -Light Grey - Matt



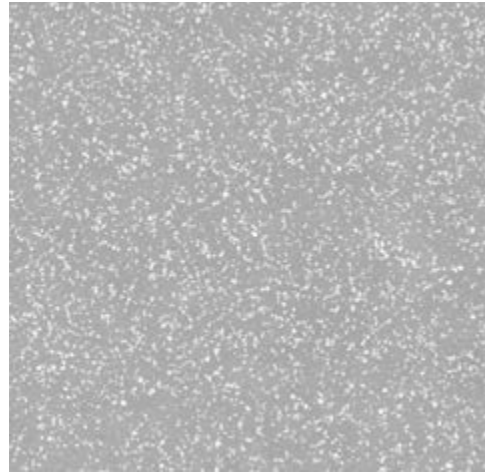
# VALENTINO



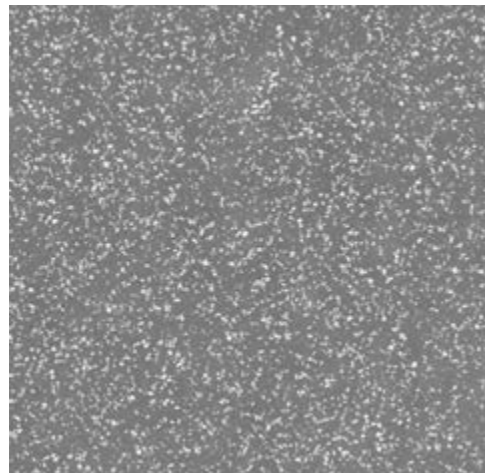
100x100cm



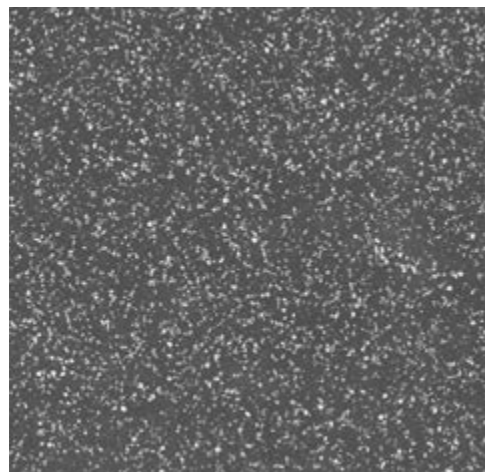
10 mm



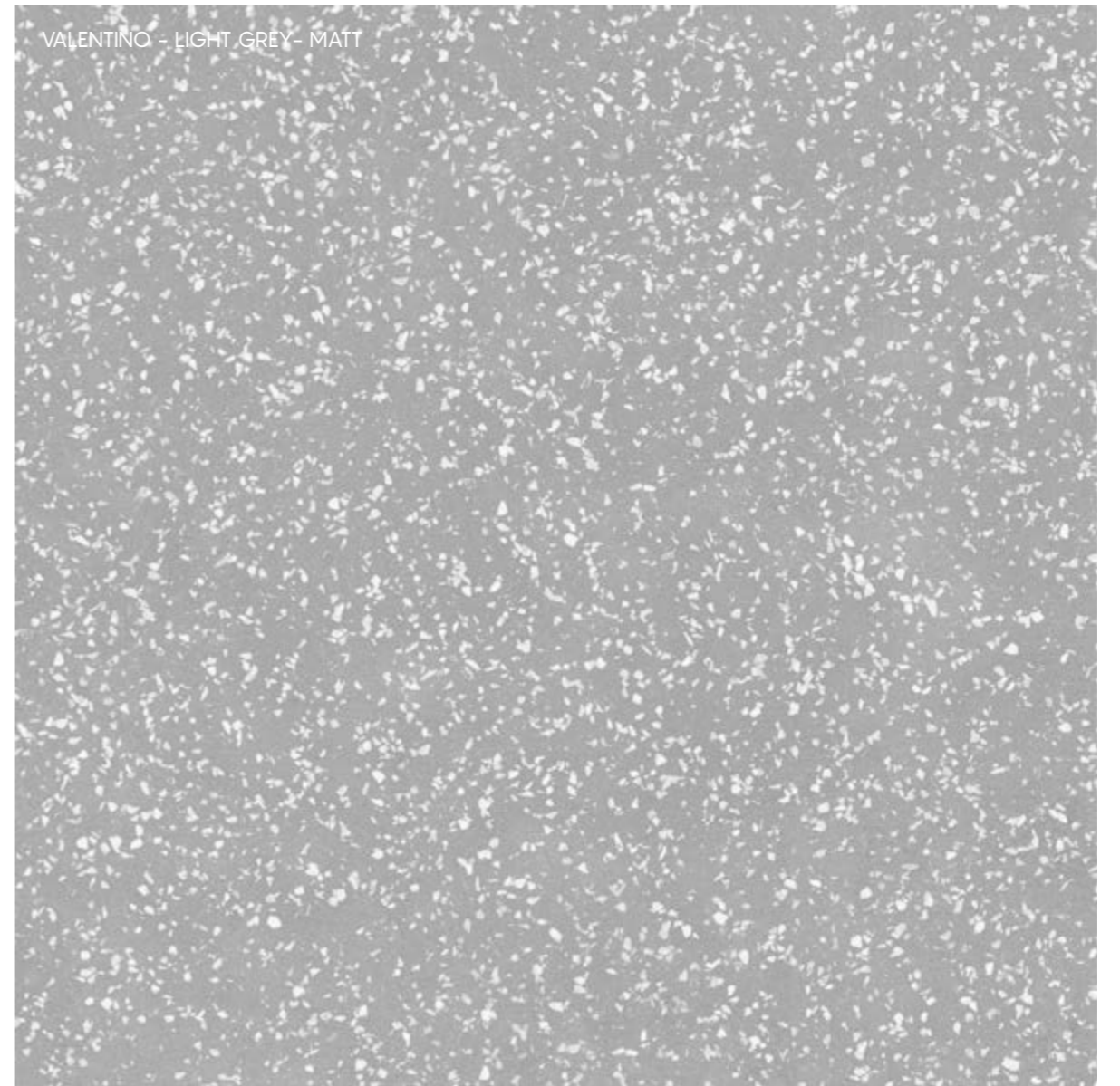
Light Grey  
Matt - Code: 9293



Grey  
Matt - Code: 9294



Dark Grey  
Matt - Code: 9295



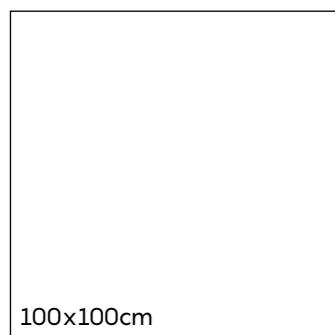
VALENTINO - LIGHT GREY - MATT



# VALENTINO

VALENTINO is a modern inspiration of mosaic in a minimal pattern. It offers a striking style for the design of public and private interiors with its new architectural approaches. This design is available in three shades of grey, in matt finishes, in 100x100 format.

VALENTINO è un'ispirazione moderna del mosaico in un modello minimale. Offre uno stile sorprendente per la progettazione di interni pubblici e privati con i suoi nuovi approcci architettonici. Questo design è disponibile in tre tonalità di grigio, nelle finiture opache, nel formato 100x100.







Valentino - Grey - Matt



Valentino - Dark Grey - Matt

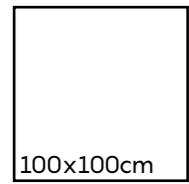




# MARBLE

TIFFANY	70
CALACATTA   PALAZZO	74
CALACATTA   CARMEN	76
TERRABIANCA	82
OPAL   MONTE BIANCO	86
DELPHUS	90
CANYON	98
ONYX	96
ALPI	102
BRILLANTE	106

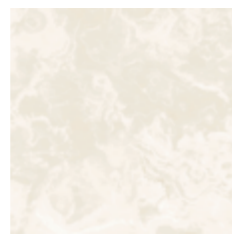
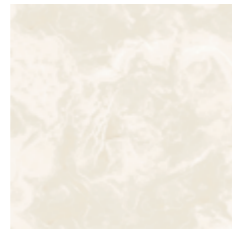
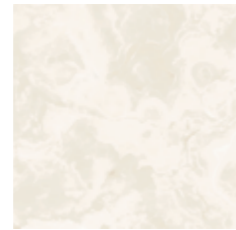
# TIFFANY



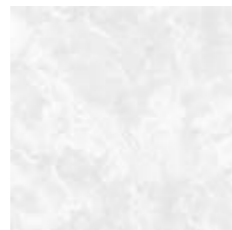
100x100cm



10 mm



Gold  
Polished - Code: 9306



Silver  
Polished - Code: 9307





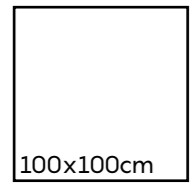


Tiffany - Silver - Polished



Tiffany - Gold - Polished

# CALACATTA | PALAZZO



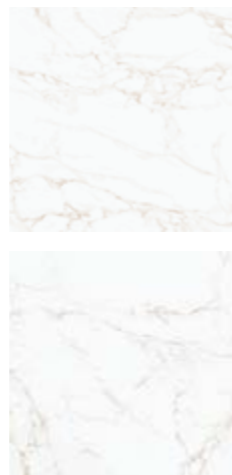
100x100cm



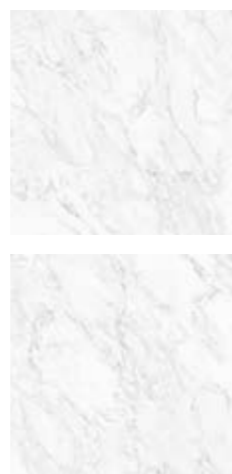
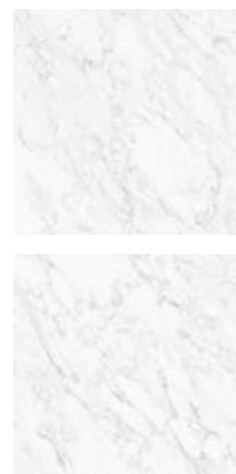
10 mm



Calacatta - Grey  
Matt - Code: 9134  
Polished - Code: 9304



Calacatta - Gold  
Matt - Code: 9133  
Polished - Code: 9303



Palazzo  
Polished - Code: 9309



PALAZZO - Grey - POLISHED



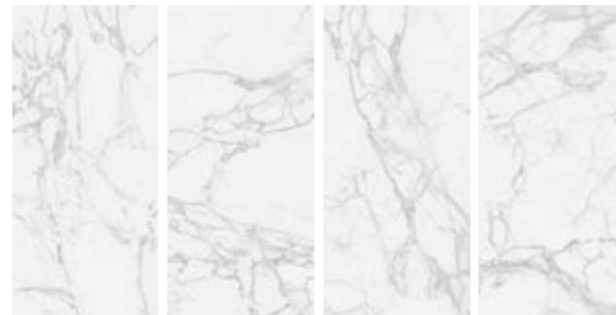
# CALACATTA | CARMEN



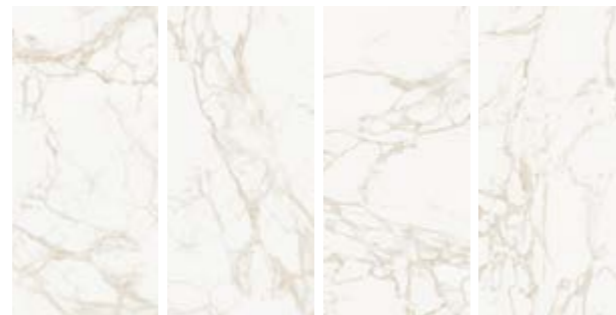
60x120cm



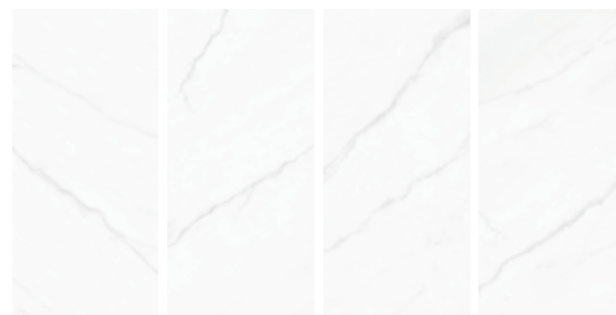
10 mm



Calacatta - Grey  
Matt - Code: 9134  
Polished - code: 9129



Calacatta - Gold  
Matt - Code: 9133  
Polished - code: 9128



Carmen  
Polished - Code: 9116



CALACATTA | PALAZZO



Palazzo - Grey - Polished



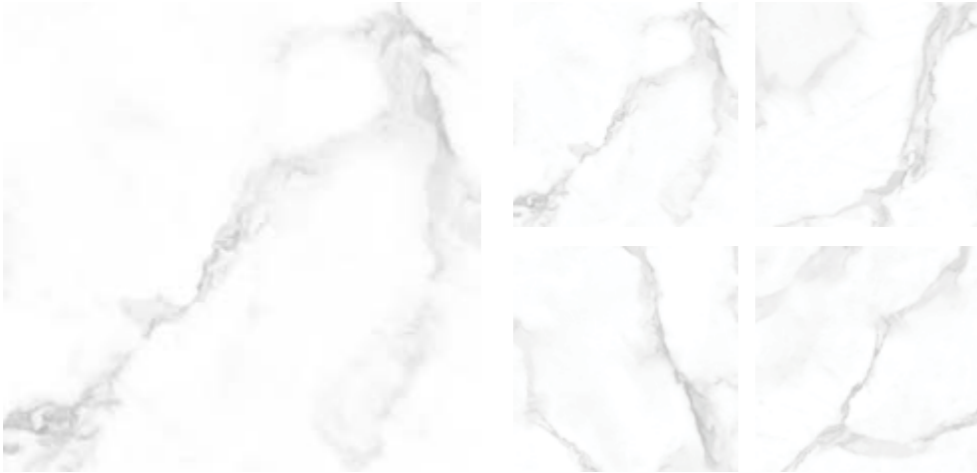
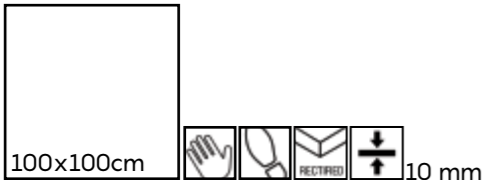
Calacatta - Gold - Polished



CALACATTA - CARMEN



# TERRA BIANCA



Terra bianca - Grey  
Matt - Code: 9316  
Polished - Code: 9312



Terra bianca - Gold  
Matt - Code: 9317  
Polished - Code: 9313



TERRA BIANCA - GREY - POLISHED



TERRA BIANCA

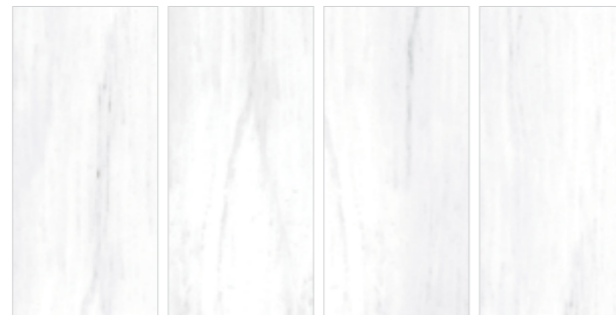


# OPAL | MONTE BIANCO

60x120cm



Opal  
Matt - Code: 9182  
Polished - Code: 9127



Monte Bianco  
Matt - Code: 9199  
Polished - Code: 9172

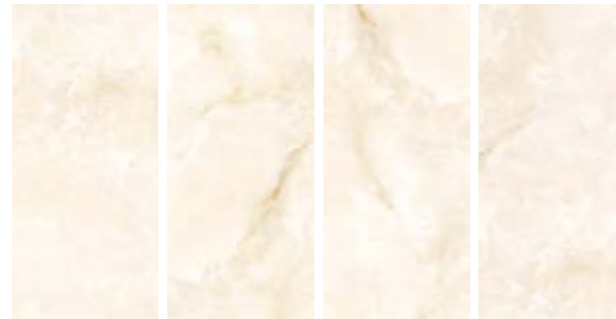




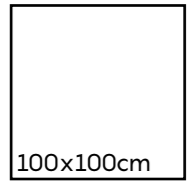
OPAL | MONTE BIANCO



# DELPHUS



Matt - Code: 9181  
Polished - Code: 9125



Matt - Code: 9299  
Polished - Code: 9305







Delphus - Matt



Delphus - Polished

# CANYON

60x120cm



White  
Polished - Code: 9185



Beige  
Polished - Code: 9184







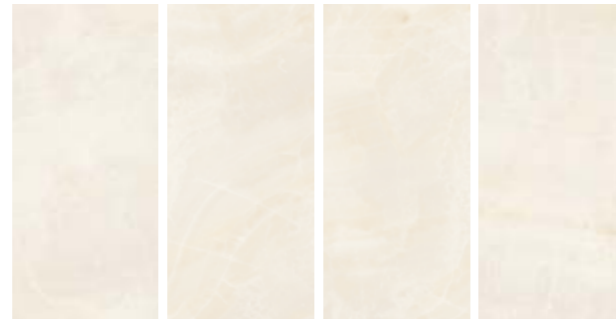
Canyon - White - Polished



Canyon - Beige - Polished

# ONYX

60x120cm



Beige  
Polished - Code: 9167



Light Grey  
Polished - Code: 9169



Grey  
Polished - Code: 9168







Onyx - Beige - Polished



Onyx - Light - Polished



# ALPI

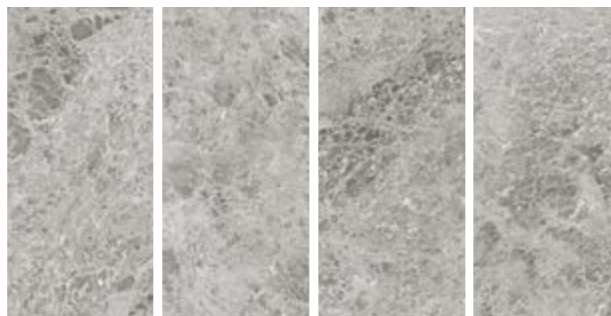
60x120cm



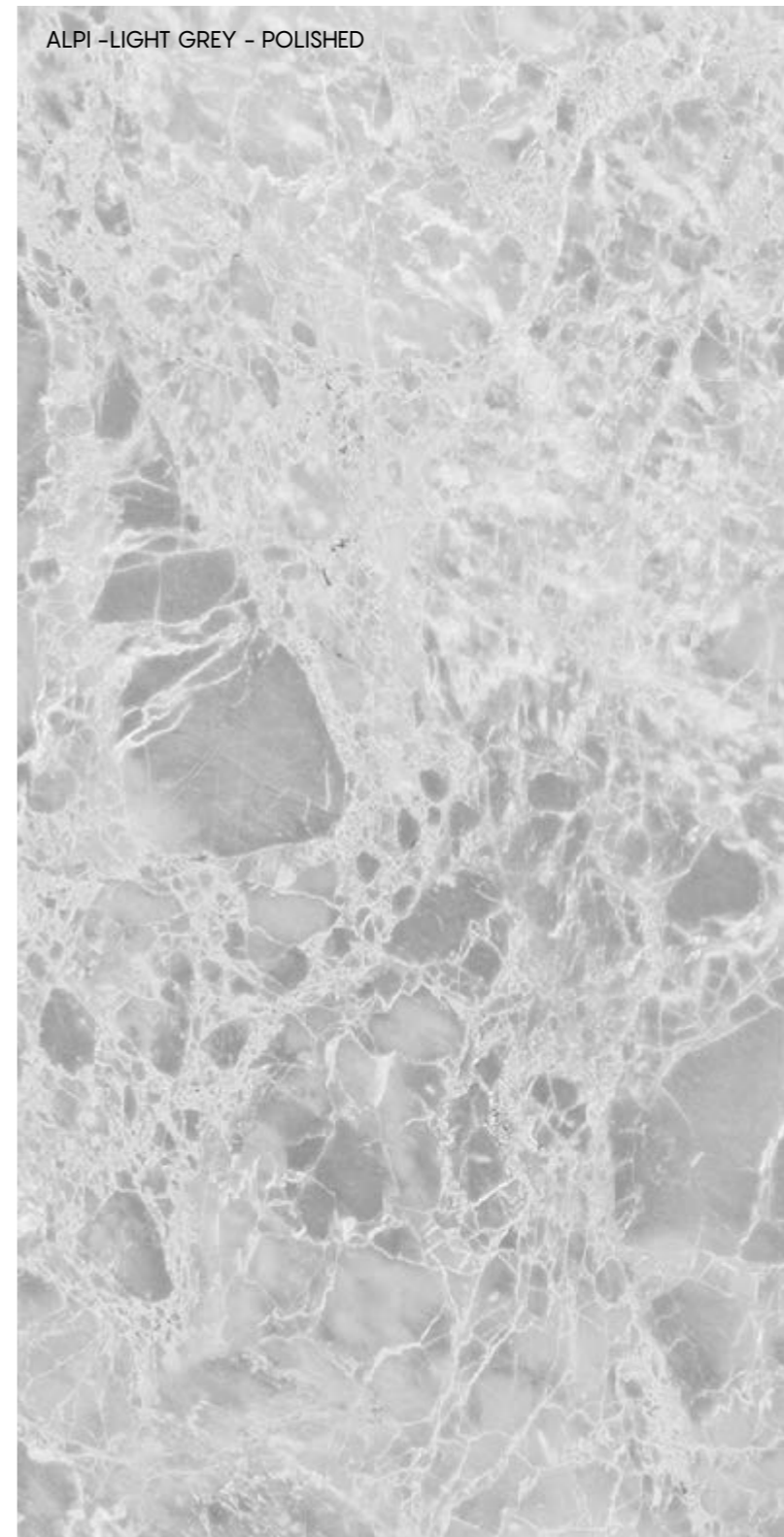
Beige  
Polished - Code: 9100



Light Grey  
Polished - Code: 9104



Grey  
Polished - Code: 9103

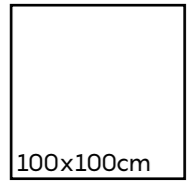


ALPI -LIGHT GREY - POLISHED





# BRILLANTE



100x100cm



10 mm



Brillante - Grey  
Matt - Code: 9326  
Polished - Code: 9325





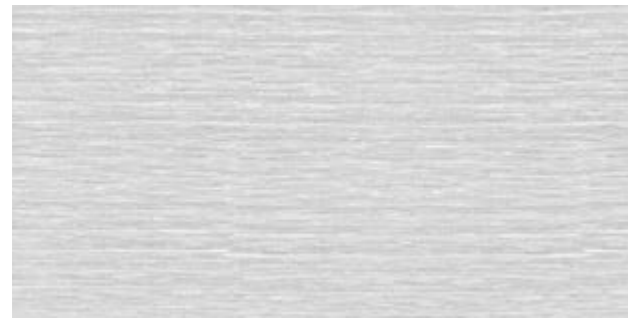
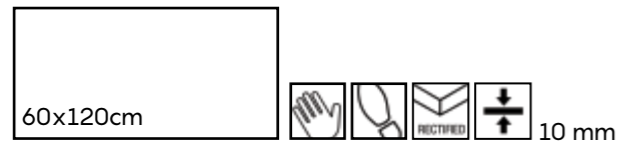




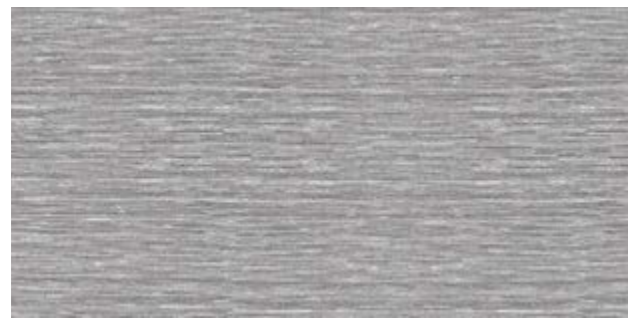
TRAME	112
DECAPÉ	118
VINTAGE WOOD	122



# TRAME - LINO



Light Grey  
Matt - Code: 9231



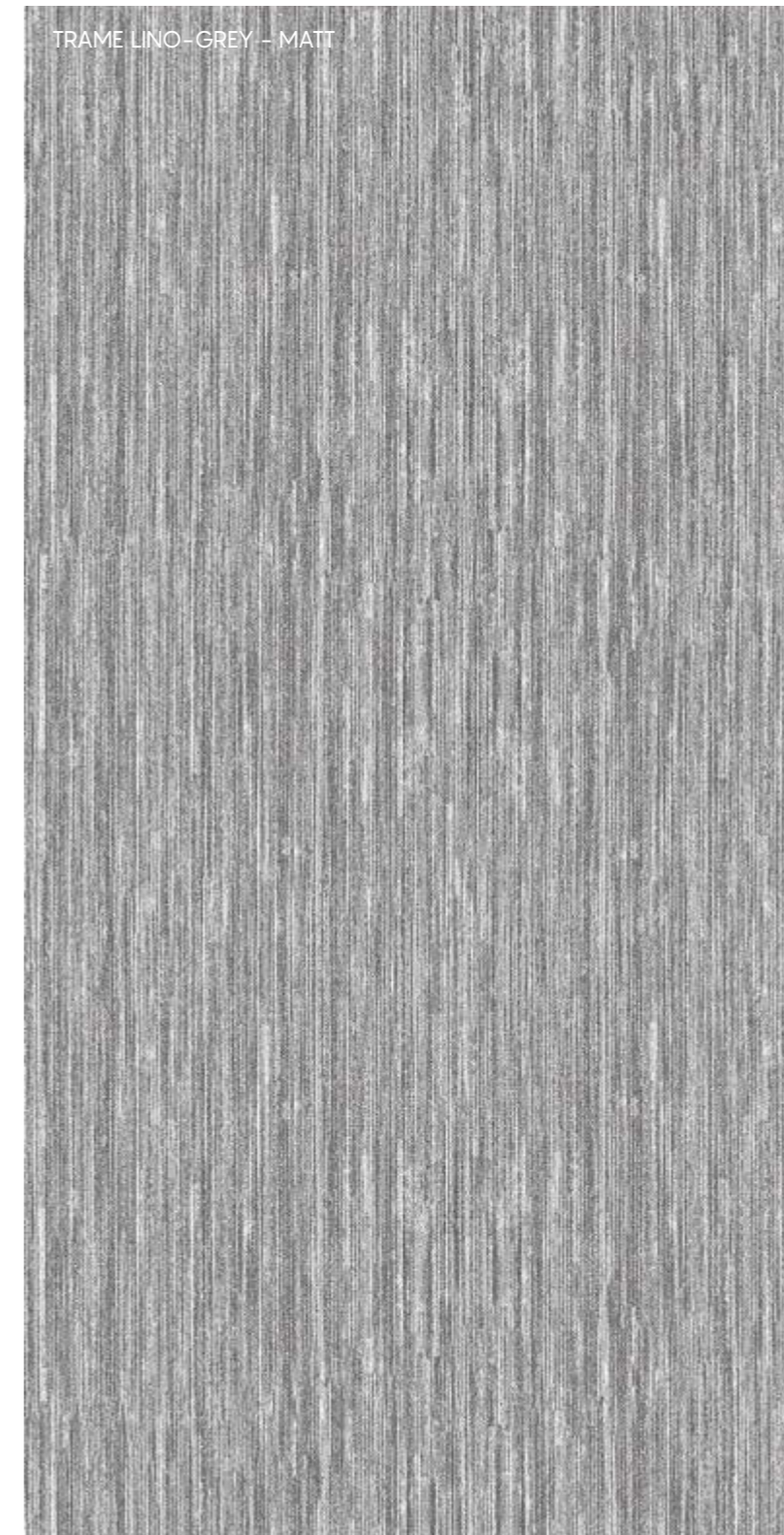
Grey  
Matt - Code: 9230



Dark Grey  
Matt - Code: 9229

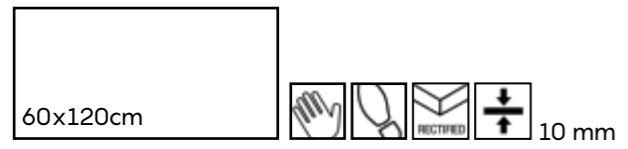


Brown  
Matt - Code: 9227



TRAME LINO-GREY - MATT

# TRAME - CALASSICO



Beige  
Matt - Code: 9232



Brown  
Matt - Code: 9233







Trame Classico - Brown - Matt



Trame Lino - Brown - Matt

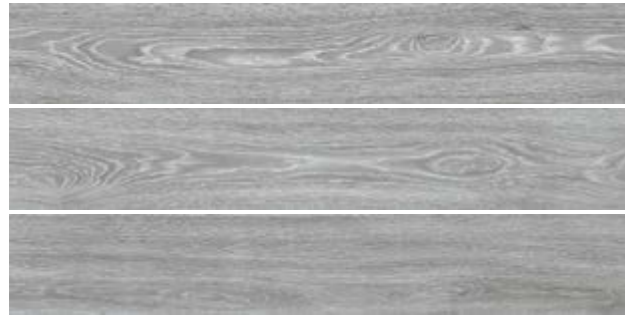


# DECAPÉ

20x120cm  10 mm



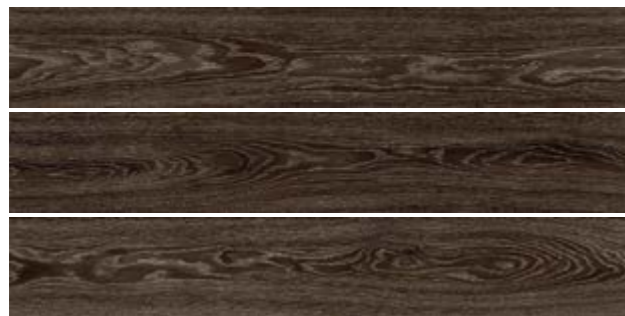
Light Beige  
Matt - Code: 9196



Light Grey  
Matt - Code: 9198



Brown  
Matt - Code: 9195



Dark Brown  
Matt - Code: 9197







Decape - Light Beige - Matt



Decape - Light - Matt

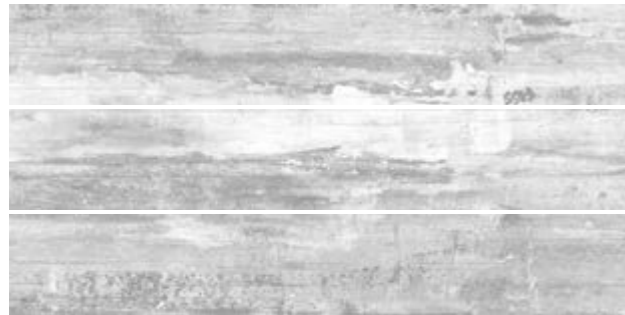


# VINTAGE WOOD

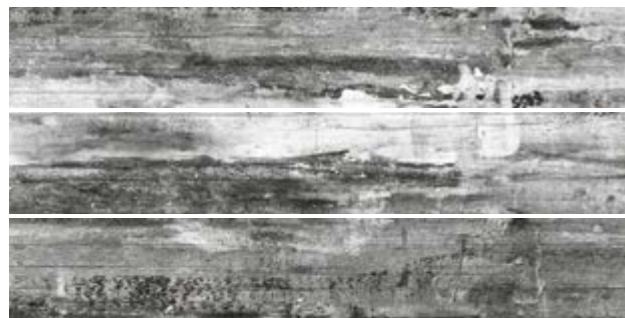
20x120cm  10 mm




White  
Matt - Code: 9157



Grey  
Matt - Code: 9156



Black  
Matt - Code: 9158

60x120cm  10 mm



White  
Matt - Code: 9157  
Polished - Code:9163





VINTAGE WOOD



Vintage Wood - Black - Matt



Vintage Wood - Grey - Matt





VOLCAMONICA  
MARQUINA

128  
134

STONE



# VOLCAMONICA

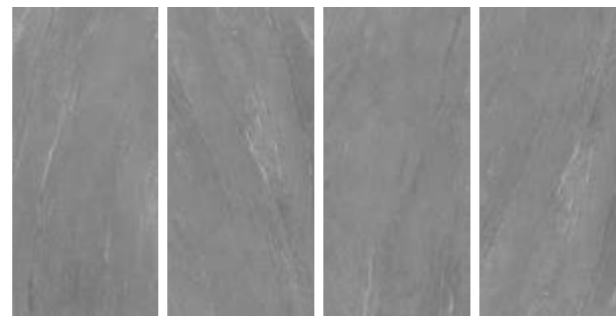
60x120cm



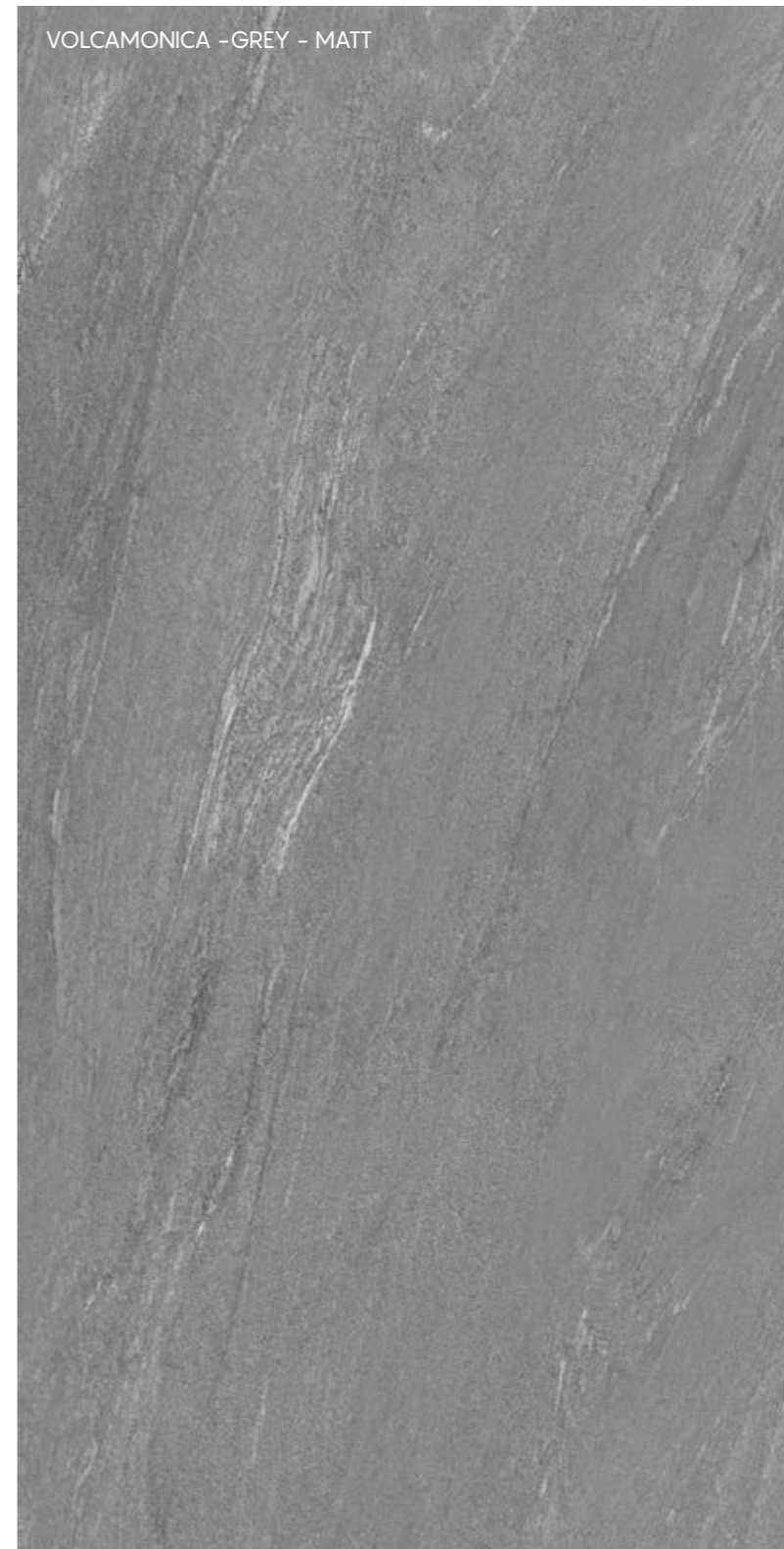
Beige  
Matt - Code: 9260



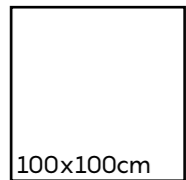
Light Grey  
Matt - Code: 9261



Grey  
Matt - Code: 9262



# VOLCAMONICA



100x100cm



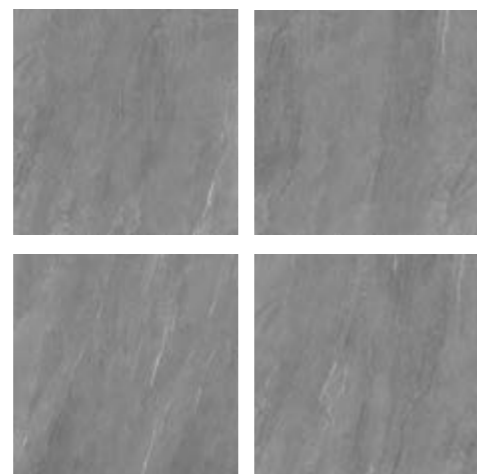
10 mm



Beige  
Matt - Code: 9290



Light Grey  
Matt - Code: 9291



Grey  
Matt - Code: 9292





VOLCAMONICA

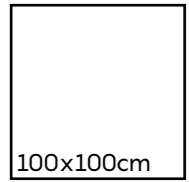


Volcamonica - Beige - Matt





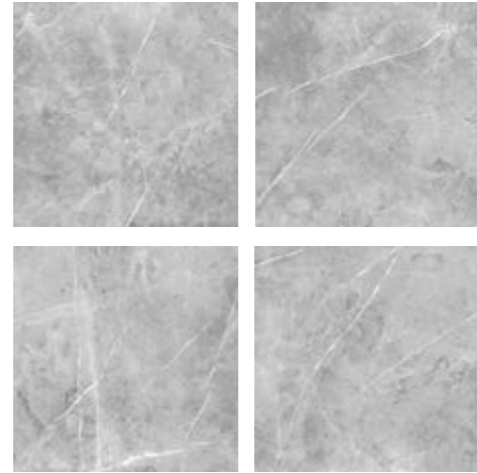
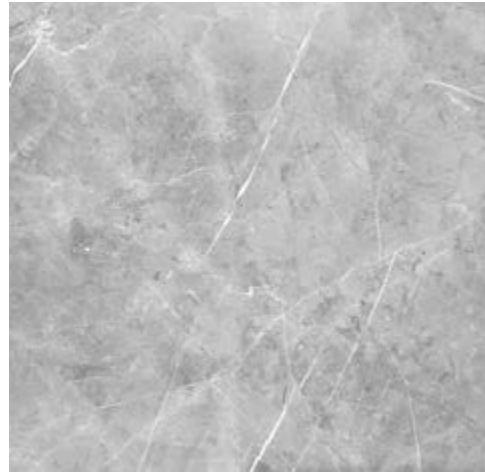
# MARQUINA



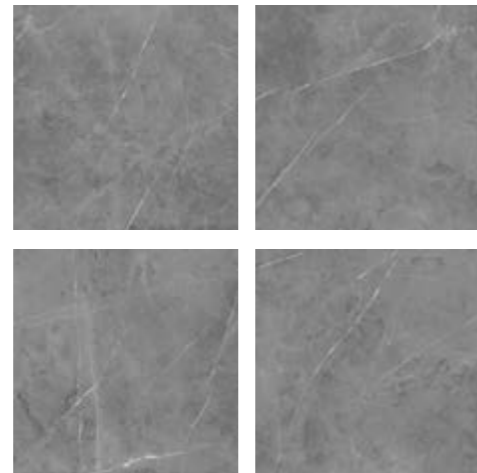
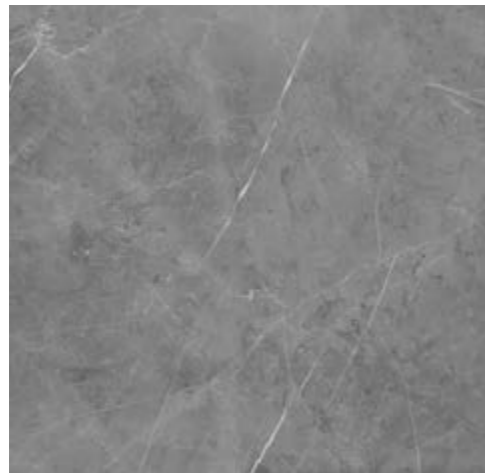
100x100cm



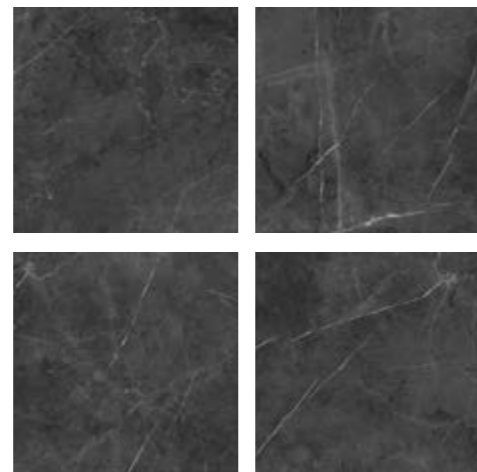
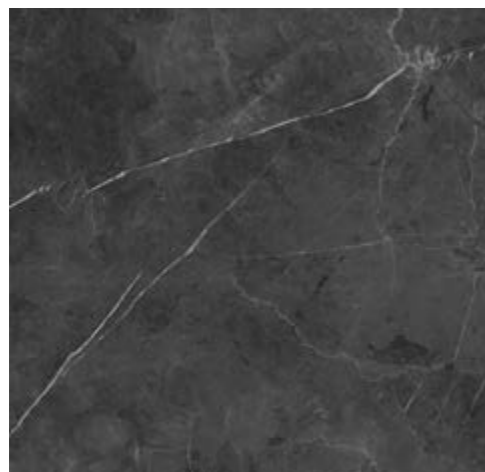
10 mm



MARQUINA - Light Grey  
Matt - Code: 9296  
Polished - Code: 9300



MARQUINA - Grey  
Matt - Code: 9297  
Polished - Code: 9301



MARQUINA - Dark Grey  
Matt - Code: 9298  
Polished - Code: 9302





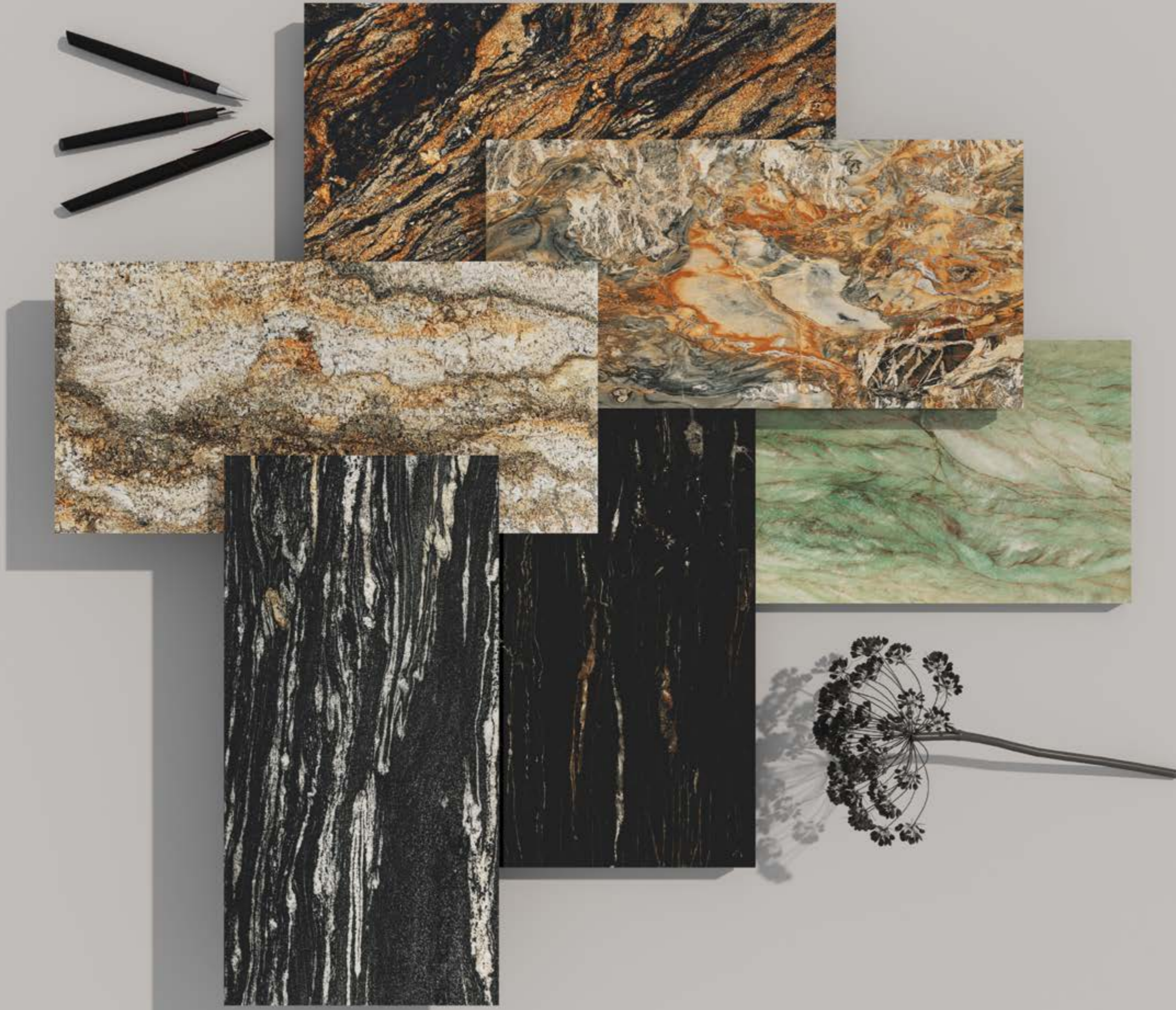


Marquina - Light - Matt



Marquina - Grey - Polished





FASHION STONE

PIRITE ORO	140
INDUSTRIA	144
BELVEDERE	148
PLATINIUM	154
TRENTINO	160
PRESIDENT	166
GAYA	172
IRISH GREEN	178
MAGMA GOLD	184



# PIRITE ORO

60x120cm



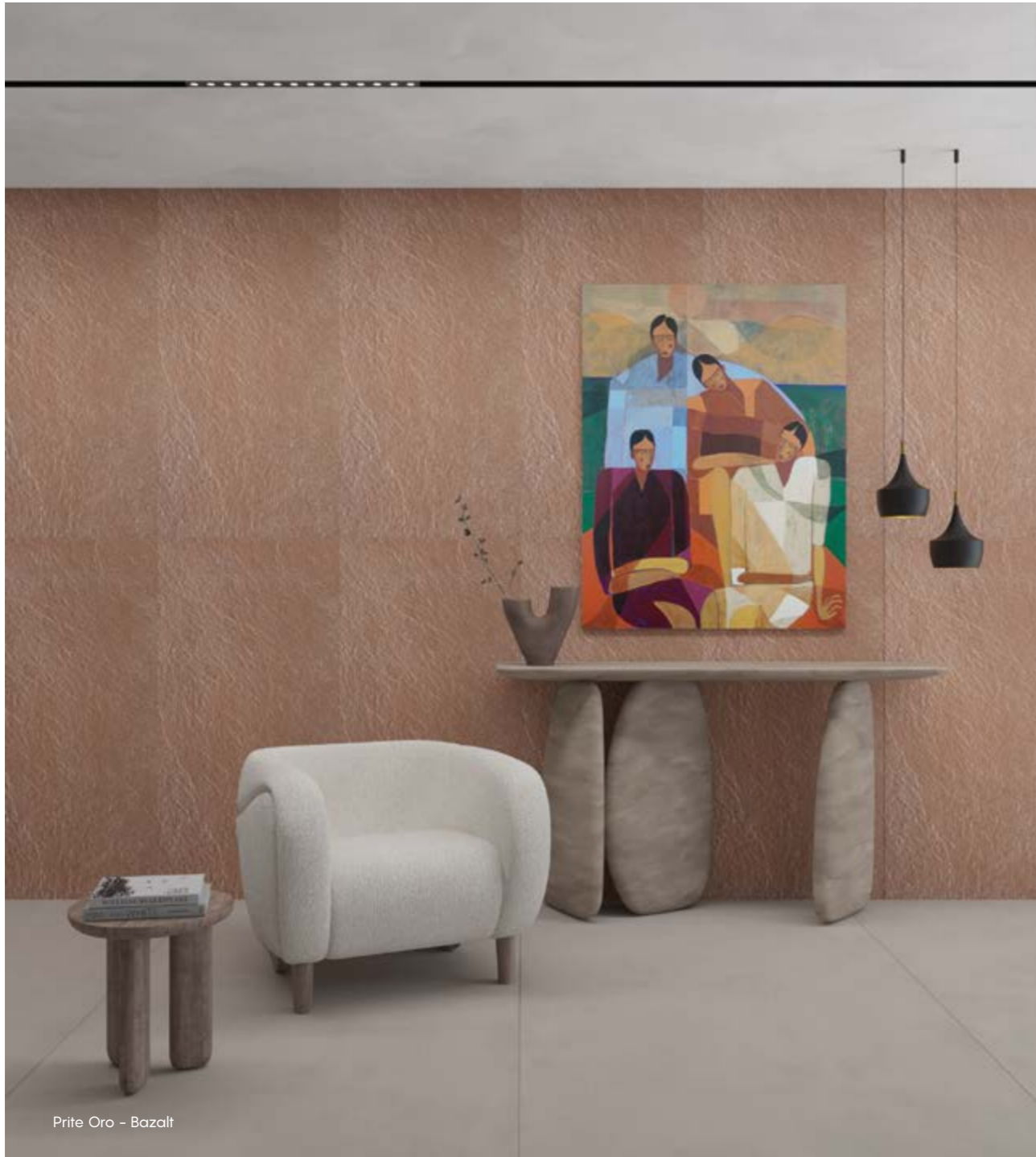
10 mm



PIRITE ORO - BAZALT  
Code: 9119









# INDUSTRIA

60x120cm



INDUSTRIA  
Matt - Code: 9155



INDUSTRIA DOT  
Matt - Code: 9161







Industria - Matt

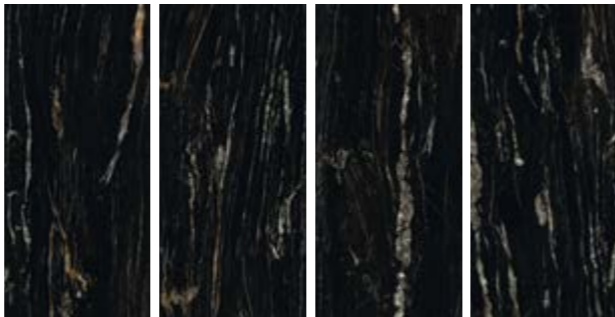


Industria - Matt



# BELVEDERE

60x120cm



BELVEDERE  
Polished - Code: 9109





## BELVEDERE

The design of the belvedere was inspired by a stone of the same name in Italy. The combination of coarse gray streaks with thinner streaks of white and gold has created an impressive depth in this marble design, which makes it a remarkable element in interior design.

Il design del belvedere è stato ispirato da una pietra omonima in Italia. La combinazione di striature grigie grossolane con striature più sottili di bianco e oro ha creato una profondità impressionante in questo design in marmo, che lo rende un elemento straordinario nel design d'interni.



60x120cm





Belvedere - Polished

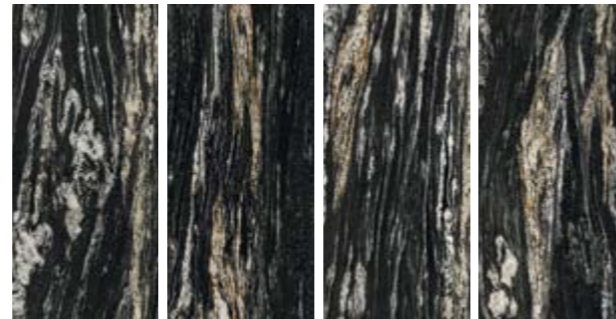
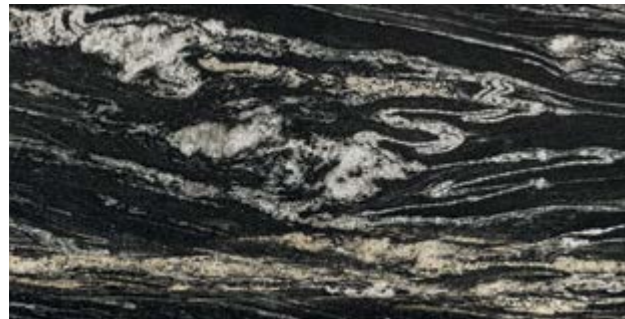


Belvedere - Polished



# PLATINIUM

60x120cm



PLATINIUM  
Polished - Code: 9110

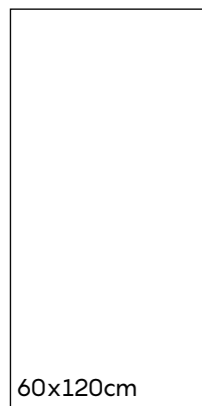




# PLATINIUM

Platinum has a black background with gold, gray streaks and light green halos. This design, which is rooted in African marbles, gives an enclosing polish to the space with its super polished surface, and it will be a special coating for the floor and wall in spaces with various uses.

Il Platinum ha uno sfondo nero con striature oro, grigie e aloni verde chiaro. Questo design, che affonda le sue radici nei marmi africani, dona una lucentezza avvolgente allo spazio con la sua superficie super lucida, e sarà un rivestimento speciale per il pavimento e le pareti in spazi con vari usi.





PLATINIUM



Platinum - Polished



Platinum - Polished



# TRENTINO

60x120cm



TRENTINO  
Polished - Code: 9112



TRENTINO - POLISHED



## TRENTINO

In Trentino, there are orange, green and gray streaks on a relatively cold beige background and a crystal texture, it has a stunning shine. These streaks make Ternetito the focal point of your room and an ideal design for kitchen countertops, bathrooms or walls and floors. This design may seem busy and full of streaks at first glance, but the result of its application on large surfaces will be a unique and unmatched space.

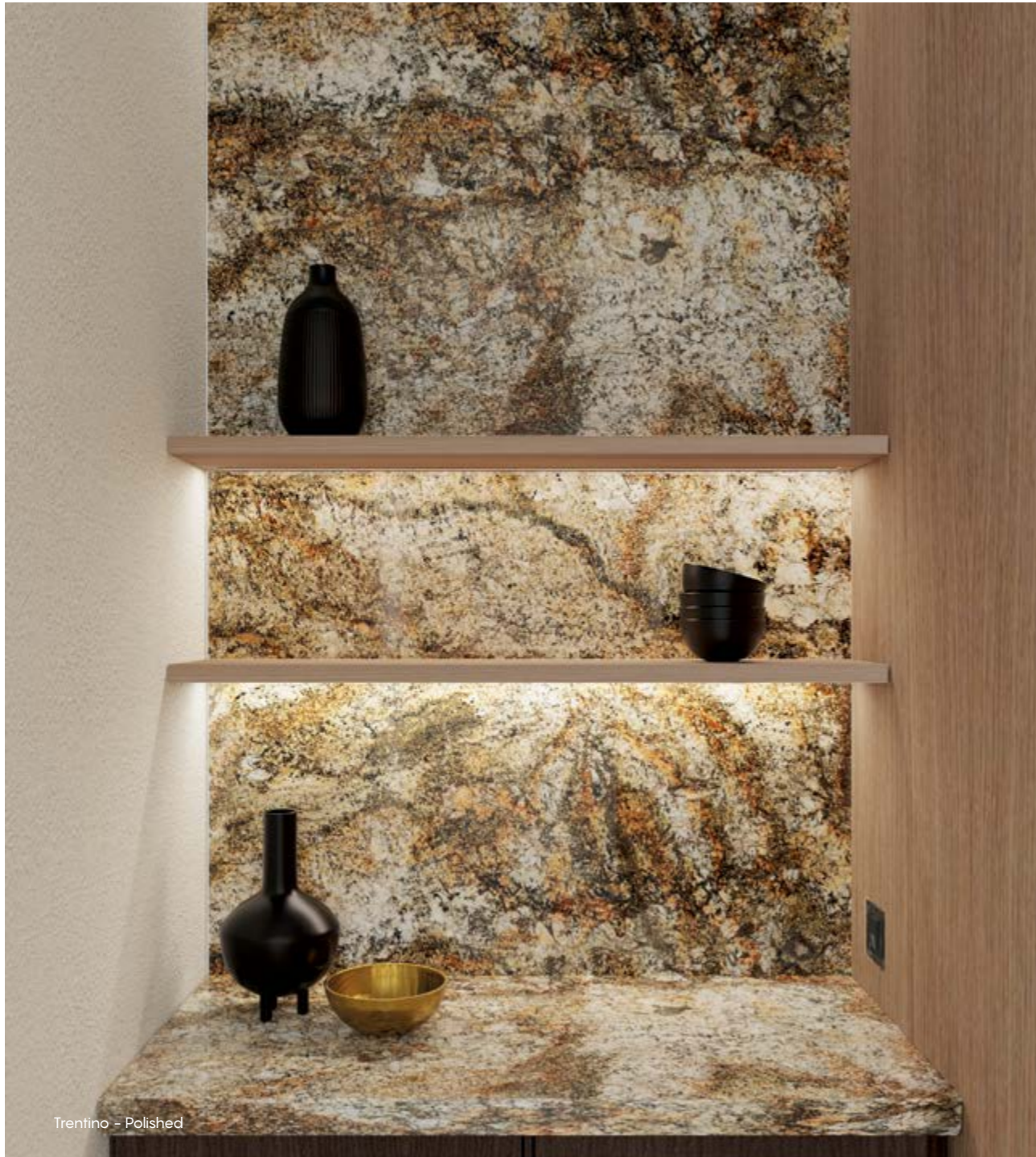
In Trentino ci sono striature arancioni, verdi e grigie su uno sfondo beige relativamente freddo e una trama cristallina, ha una lucentezza sorprendente. Queste striature rendono Ternetito il punto focale della tua stanza e un design ideale per piani cucina, bagni o pareti e pavimenti. Questo design può sembrare a prima vista occupato e pieno di striature, ma il risultato della sua applicazione su grandi superfici sarà uno spazio unico e senza eguali.

60x120cm





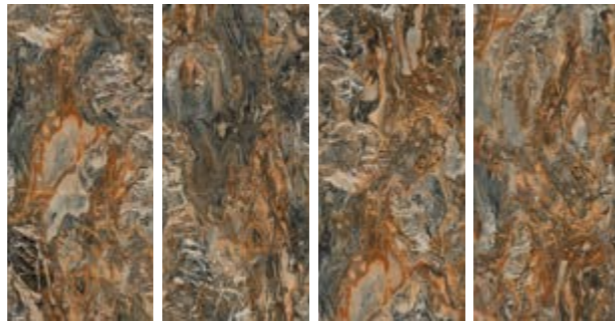
TRENTINO





# PRESIDENT

60x120cm



PRESIDENT  
Polished - Code: 9113

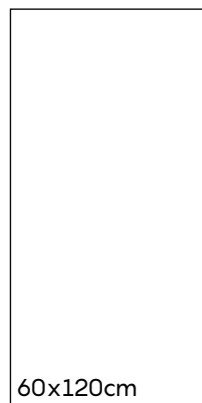




# PRESIDENT

If you're looking to add a warmer vibe to your space, President is the perfect choice. In this design, the predominance of warm red and orange colors is moderated with gray and blue halos. Reconciling designs with such apparent contradictions can be difficult. However, this design, next to colors such as gray, black and cream-beige, shows its beauty twice.

Se stai cercando di aggiungere un'atmosfera più calda al tuo spazio, President è la scelta perfetta. In questo design, la predominanza dei caldi colori rosso e arancio è moderata con aloni grigi e blu. Conciliare progetti con tali apparenti contraddizioni può essere difficile. Tuttavia, questo design, accanto a colori come il grigio, il nero e il beige crema, mostra la sua bellezza due volte.



60x120cm



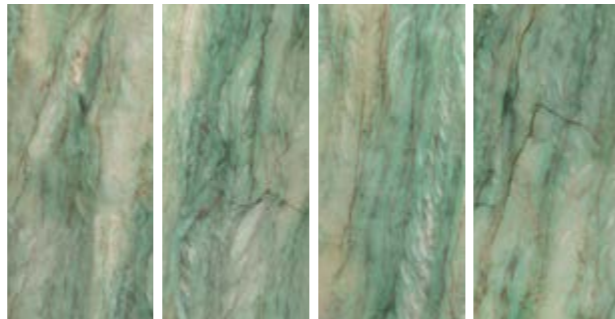
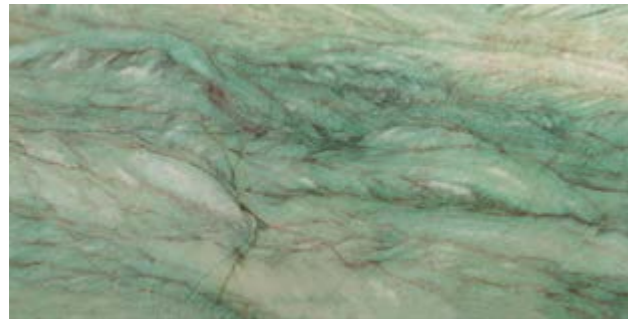






# GAYA

60x120cm



GAYA  
Polished - Code: 9111





## GAYA

The Gaya design is inspired by the Brazilian quartzite stone. The light tonality of the green color and halos of cream and orange in between, in balance with the crossed veins, make the design vivid and impressive.

Il design Gaya si ispira alla pietra di quarzite brasiliana. La tonalità calma del colore verde e gli aloni di crema e arancio nel mezzo, in equilibrio con le venature incrociate, rendono il disegno vivido e impressionante.

60x120cm



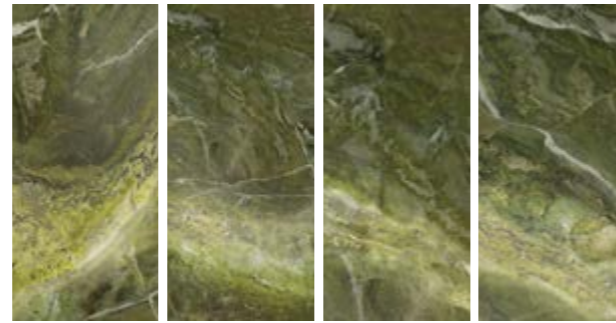
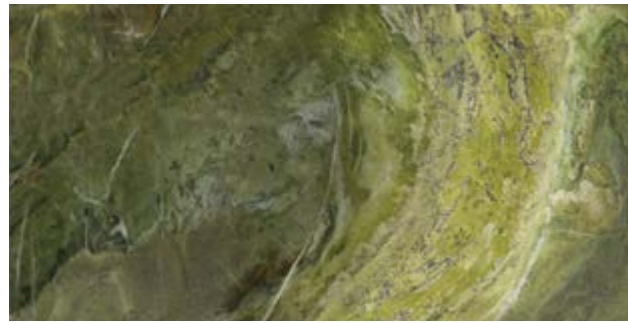






# IRISH GREEN

60x120cm



IRISH GREEN  
Polished - Code: 9115

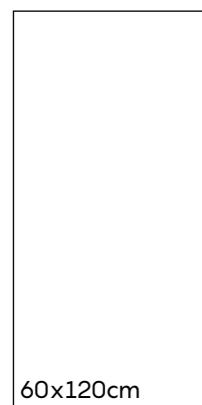




## IRISH GREEN

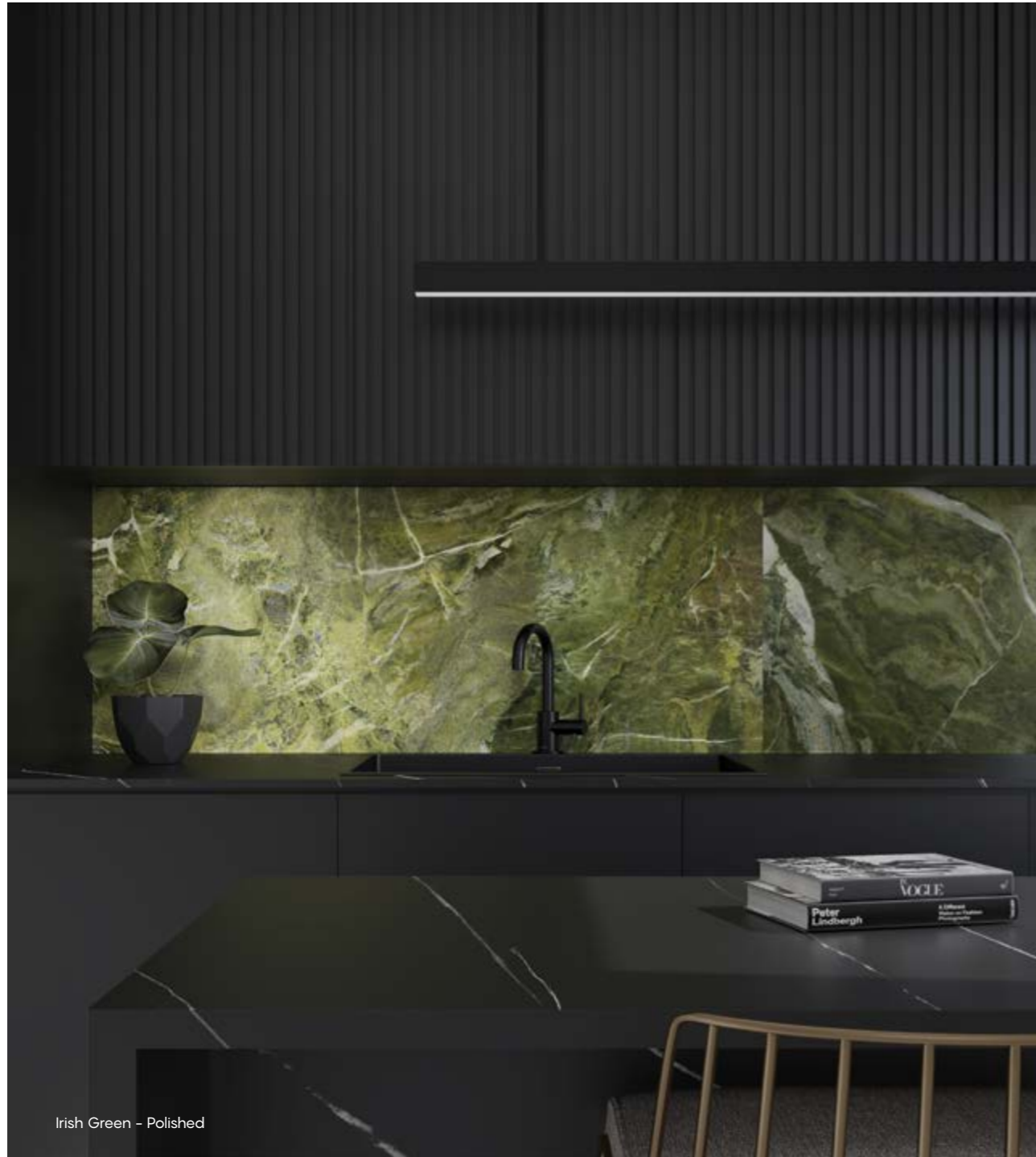
Irish Green is the green color of the Irish flag. The emerald gem with those green hills and those rich green shades. The Irish Green design can be a reminder of nature, freshness, flourishing of life and a new beginning. It can give life to the interior space and create a sense of the outside space inside.

Irish Green è il colore verde della bandiera irlandese. La gemma di smeraldo con quelle verdi colline e quelle ricche sfumature di verde. Il design Irish Green può ricordare la natura, la freschezza, lo sbocciare della vita e un nuovo inizio. Può dare vita allo spazio interno e creare un senso dello spazio esterno all'interno.





IRISH GREEN



Irish Green - Polished

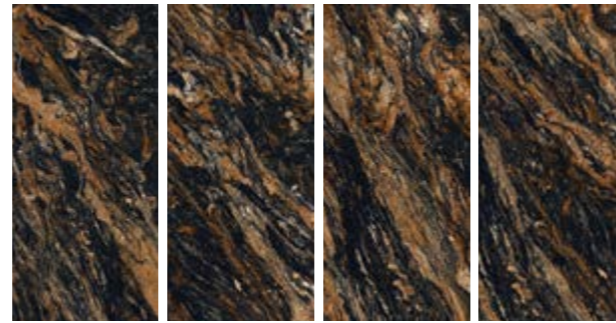


Irish Green- Polished



# MAGMA GOLD

60x120cm



MAGMA GOLD  
Polished - Code: 9114





## MAGMA GOLD

An exotic combination of golden, brown and dark orange colors with rusty streaks on a black background has created an eye-catching design. This design is inspired by a stone of the same name with Brazilian roots.

Una combinazione esotica di colori dorati, marroni e arancioni infuocati con striature ruggine su sfondo nero ha creato un design accattivante. Questo design è ispirato a una pietra con lo stesso nome con radici brasiliane.



60x120cm



MAGMA GOLD

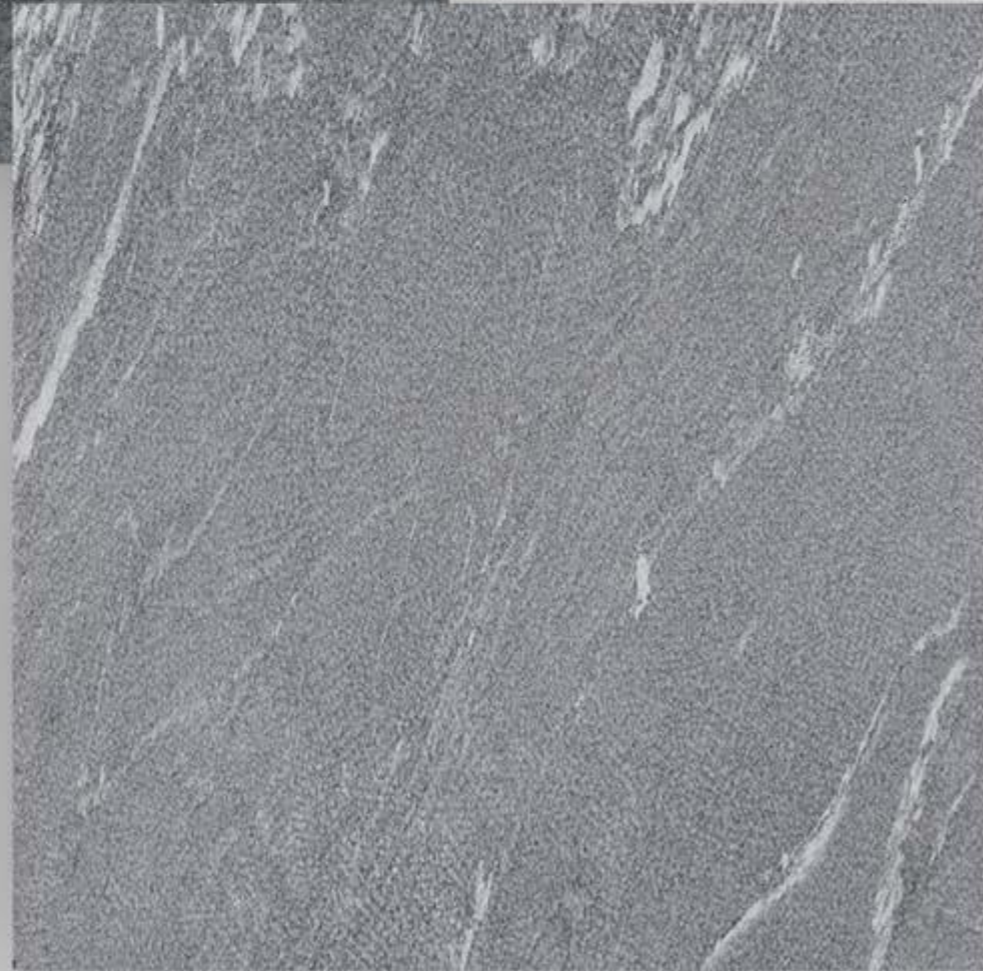
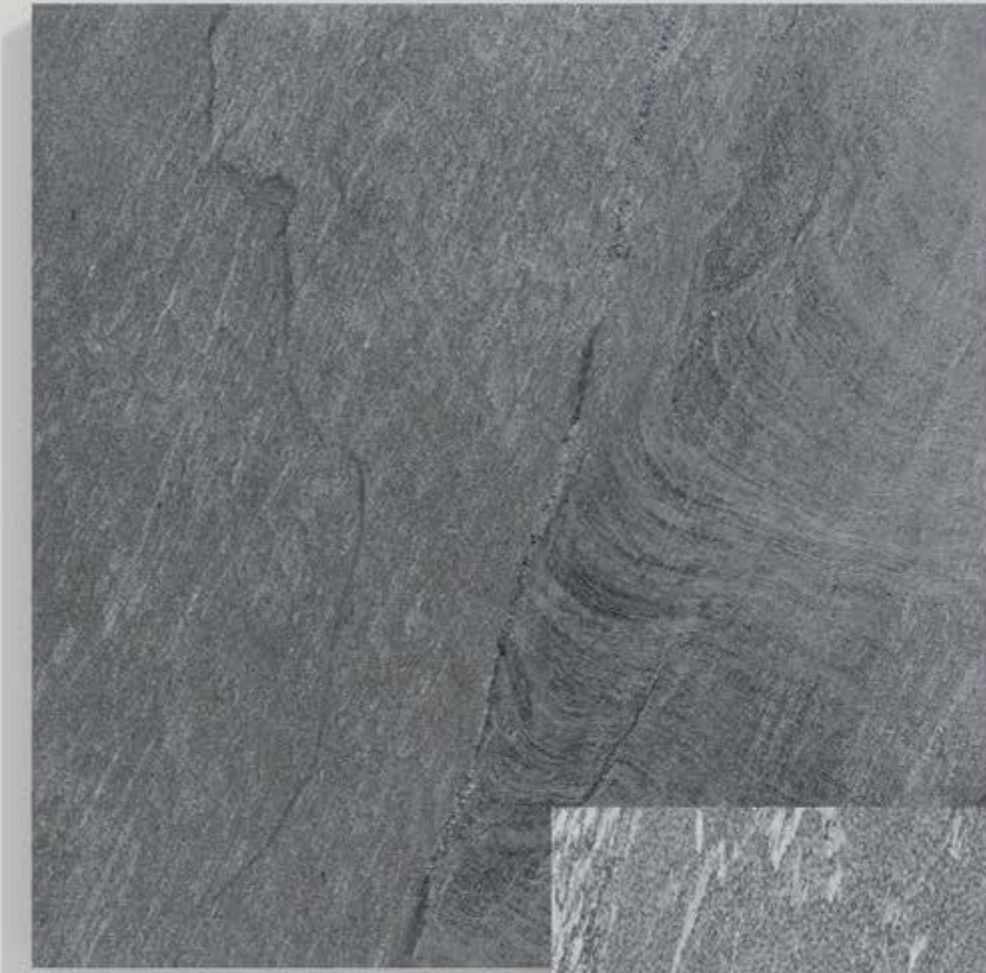


Magma Gold - Polished



Magma Gold- Polished





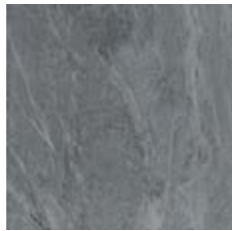
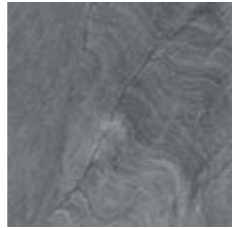
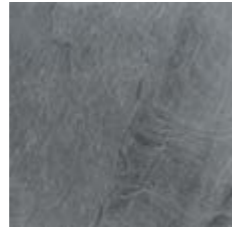
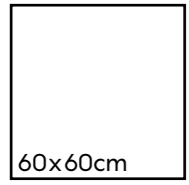
STORM  
GRIS

60x60 cm NEW COLLECTION

192  
196



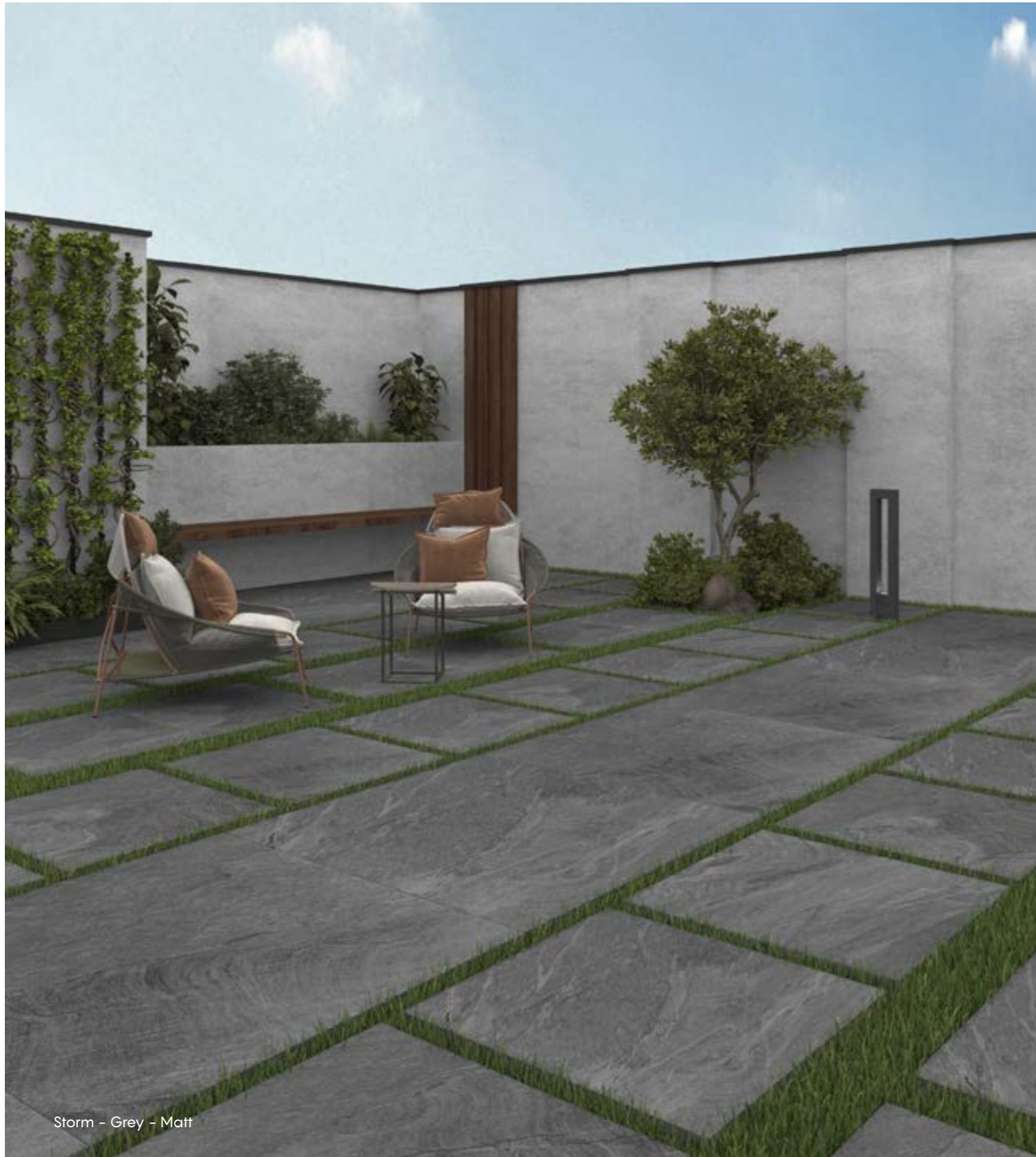
# STORM



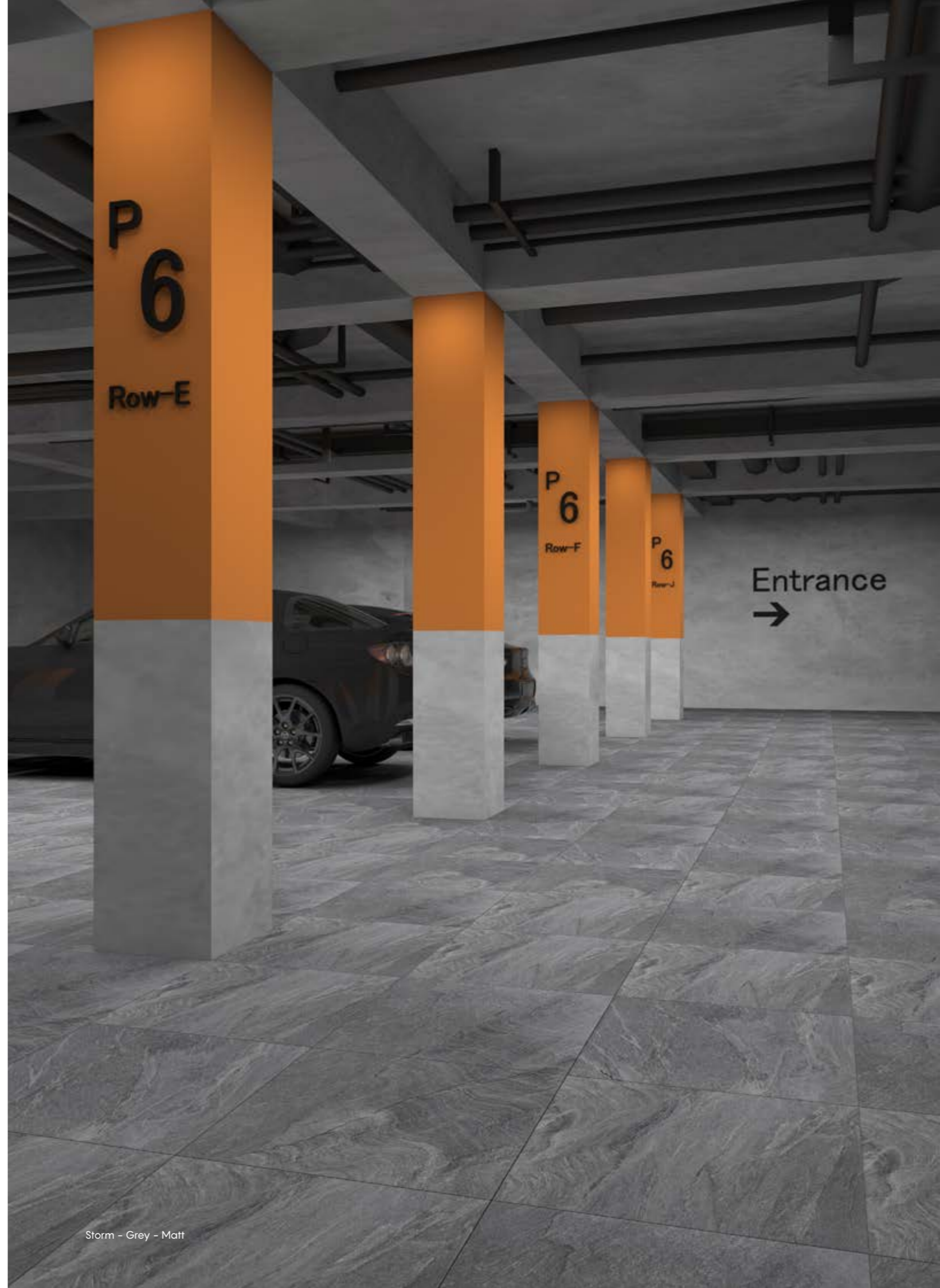
STORM - Grey  
Matt - Code: 6601







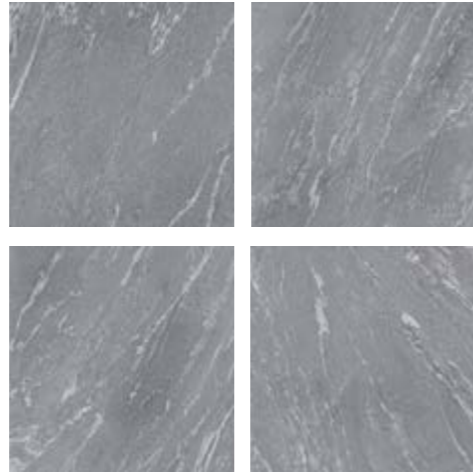
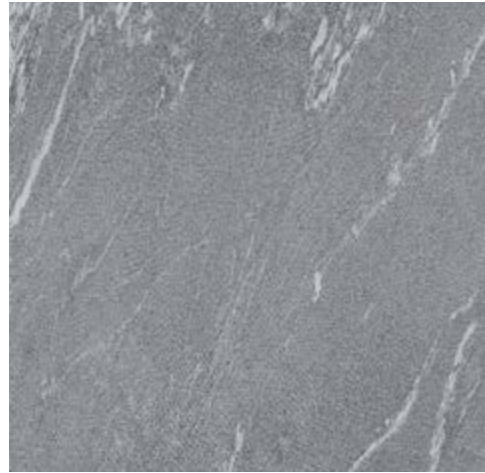
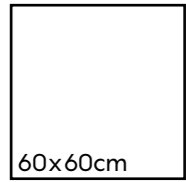
Storm - Grey - Matt



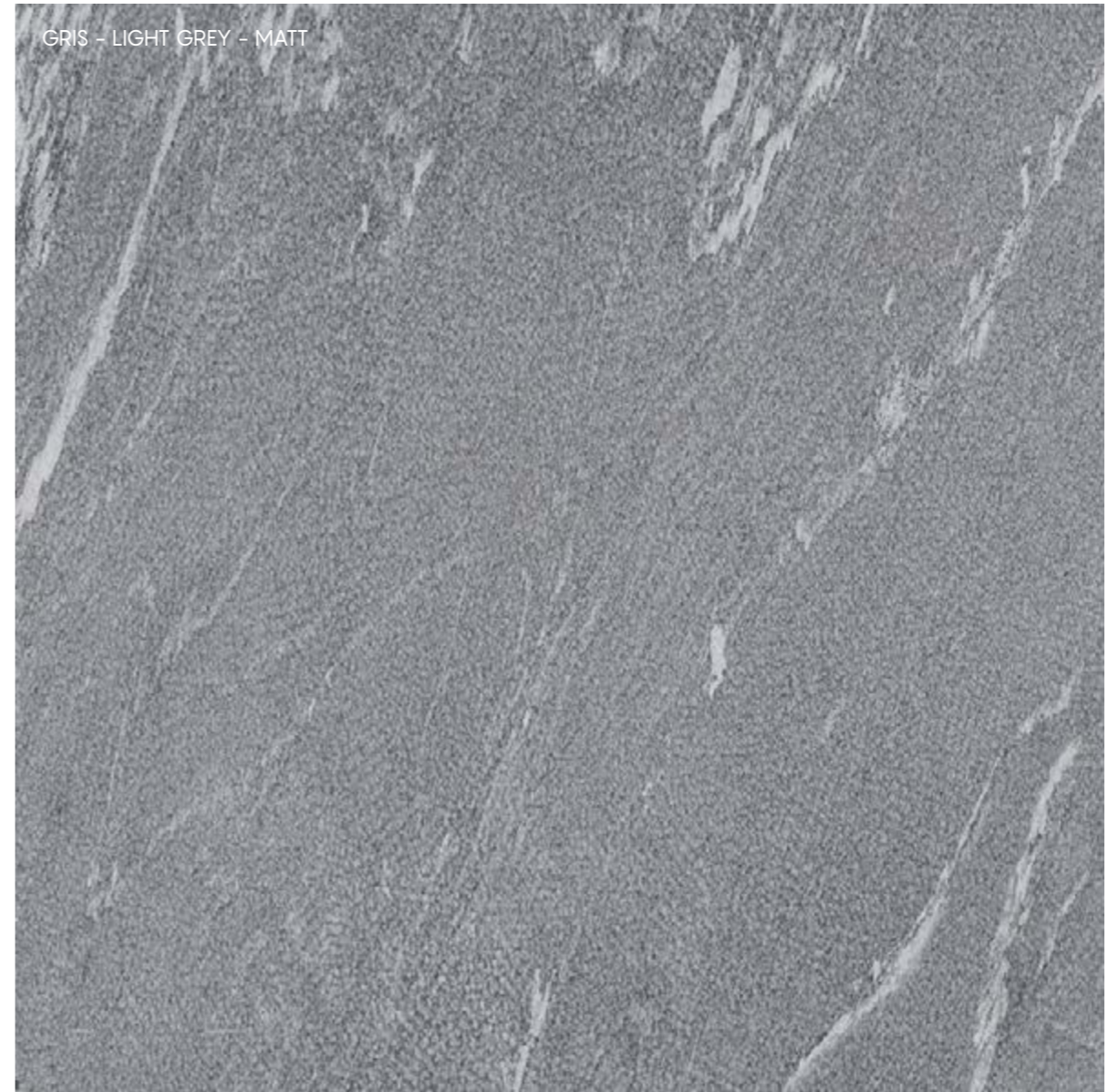
Storm - Grey - Matt



# GRIS



GRIS - Light Grey  
Matt - Code: 6602







Gris - Light Grey - Matt




Gris - Light Grey - Matt



# TECHNICAL FEATURES



**PRODUCT CERTIFICATION & DECLARATION OF PERFORMANCE**  
 CERTIFICAZIONE DRL PROTTO& DICHAIRAZIONE DI PRESTAZIONE

Technical Characteristics <i>Caratteristiche Tecniche</i>	Standards <i>Norma</i>	Standard values <i>valore Norma</i>	Average Values <i>valore medio</i>
 <b>LENGTH &amp; WIDTH</b> <i>LUNGHEZZA LARGHEZZA</i>		± 0.5%	± 0.1%
 <b>RECTANGULARITY</b> <i>RETTANGOLARITÀ</i>	ISO 10545-2	± 5%	± 0.2%
 <b>SIDES' STRAIGHTNESS</b> <i>RETTILINEITÀ DEI LATI</i>		± 0.5%	± 0.2%
 <b>FLATNESS</b> <i>PLANARITÀ</i>		± 0.5%	± 0.3%
 <b>WATER ABSORPTION</b> <i>ASSORBIMENTO D'ACQUA</i>	ISO 10545-3	0.5 < E ≤ 3%	Average 0.3% <i>Media 0.3%</i>
 <b>MODULUS OF RUPTURE (N/mm<sup>2</sup>)</b> <i>MODULO DI ROTTURA (N/mm<sup>2</sup>)</i>	ISO 10545-4	≥ 30 N/mm <sup>2</sup>	Average 36 <i>Media 36</i>
 <b>IMPACT RESISTANCE</b> <i>RESISTENZA ALL'IMPATTO</i>	ISO 10545-5		Min.0.8
 <b>ABRASION RESISTANCE</b> <i>RESISTENZA ALL'ABRASIONE</i>	ISO 10545-7	I - V	II - VI
 <b>THERMAL EXPANSION COEFFICIENT(0-100°C)</b> <i>COEFFICIENTE DI DILATAZIONE TERMICA(0-100°C)</i>	ISO 10545-8	Test Method Available <i>Metodo di prova disponibile</i>	Max. 7.5x10 <sup>-6</sup> (1/K)
 <b>THERMAL SHOCK RESISTANCE</b> <i>RESISTENZA AGLI SHOCK TERMICI</i>	ISO 10545-9	Required <i>Necessario</i>	In Compliance With The Requirements <i>In conformità con i requisiti</i>
 <b>CRAZING RESISTANCE</b> <i>RESISTENZA AL CAVILLO</i>	ISO 10545-11	Required <i>Necessario</i>	Method Available <i>Metodo disponibile</i>
 <b>FROST RESISTANCE</b> <i>RESISTENZA AL GELO</i>	ISO 10545-12	Required <i>Necessario</i>	In Compliance With The Requirements <i>In conformità con i requisiti</i>
 <b>CHEMICAL RESISTANCE</b> <i>RESISTENZA CHIMICA</i>	ISO 10545-13	Min. Class B	Class GLA
 <b>STAIN RESISTANCE</b> <i>RESISTENZA ALLE MACCHIE</i>	ISO 10545-14	Min. Class 3	Class 5
 <b>FRICITION COEFFICIENT</b> <i>COEFFICIENTE DI ATTRITO</i>	ISO 10545-17	Required <i>Necessario</i>	Min.II

# PACKING LIST

		Pcs	M <sup>2</sup>	Kg	Box	M <sup>2</sup>	Kg		
Nominal size	Realsize	Pcs/Box	Sqr/Box	Kg/Box	Boxes/PLT	Sqr/PLT	kg/PLT	PLT size	Thickness
20x120	19.5x120	6	1.4	35.5	36	50.4	1228	100x125	10
60x120	60x120	2	1.44	35	36	46.08	1200	105x125	10
100x100	100x100	2	2	46.8	32	64	1500	100x 105	10



# PRODUCTION

## TECHNOLOGY

Angelo Ceramica tries to stay constantly updated on the best production techniques to create the designs and configurations necessary to express the taste of ceramics. Quality and innovation represent for Angelo ceramica an essential prerogative on which to base the choice of ceramic product in its design declinations. Therefore, we always try to be as up-to-date as possible on the best production techniques that allow us to achieve aesthetic and qualitative results in the best standards. Our technologies identify different types of applications:

### GLAZED PORCELAIN (GP)

The resistance guaranteed by Gres porcelain link to the aesthetic possibilities allowed by the new graphic and glazed application, put our product in the condition to perform at its best different styles to reproduce any kind of design in order to be updated and propoitive with any trend

### COLOR BODY PORCELAIN (A+)

It represents our best technological interpretation applied to ceramics. Using the same characteristics of natural stone with therefore greater resistance and durability through the use of mixtures that still allow with the appropriate graphic applications to achieve high-level aesthetic results for all types of use, with particular attention to the most demanding from technical point of view.

### DGITAL TECHNOLOGY

Angelo Ceramica makes use of the best digital technologies on the market to always reach the highest aesthetic / quality levels in the ceramic field. The digitalization combined with the continuous research allows Angelo Ceramics alot of accuracy in the search for the final face of the design and the best possible depth especially in the case of polished versions through the use of grits that allow greater depth and better detail as well as better quality performance

### THIRD FIRE (3F)

Angelo Ceramica comprende al suo interno la possibilita' di sviluppare elementi ceramici decorativi attraverso la tecnologia del terzo fuoco, che attraverso una ulteriore applicazione di smalti nobili e ulteriore cotture permette di ottenere decori con caratteristiche uniche di design. In questo modo i decori acquistano una propria peculiarita' distintiva in termini di profondita' dell'immagine e di ricchezza del colore.



# PRODUZIONE

## TECNOLOGIE

Angelo Ceramica cerca di rimanere costantemente aggiornata sulle tecniche produttive migliori per realizzare i design e le configurazioni necessarie ad esprimere il gusto della ceramica. La qualita' e l'innovazione rappresentano per Angelo ceramica una prerogativa imprescindibile sulla quale basare la scelta del prodotto ceramico nelle sue declinazioni design. Cerchiamo quindi sempre di essere quanto piu' aggiornati possibile sulle tecniche produttive migliori che permettano di raggiungere risultati estetici e qualitativi nei migliori standard. Le nostre tecnologie individuano diversi tipi di applicazioni:

### PORCELLANATO SMALTATO

La resistenza garantita dal porcellanato unita alle possibilita' estetiche consentite dalle nuove applicazioni grafiche e di smaltatura, ci permettono di interpretare al meglio i diversi stili da riprodurre per design di ogni tipo in modo da essere propositivi e al passo con ogni trend.

### PORCELLANATO IMPASTO COLORATO (A+)

Rappresenta la ns migliore interpretazione tecnologica applicata alla ceramica. Utilizzando stesse caratteristiche della pietra naturale con quindi maggiore resistenza e durabilita' attraverso l'utilizzo di impasti che permettono comunque con le opportune applicazioni grafiche di raggiungere risultati estetici di alto livello per tutte le tipologie di utilizzo, con particolare attenzione per le piu' impegnative dal punto di vista tecnico.

### TECNOLOGIA DIGITALE

Angelo Ceramica fa uso delle migliori tecnologie digitali in commercio per poter raggiungere sempre i piu' alti livelli estetico/qualitativi in ambito ceramico. La digitalizzazione unita alla ricerca continua permette ad Angelo ceramica molta accuratezza nella ricerca del volto finale del design e la migliore profondita' possibile soprattutto nel caso di versioni levigate attraverso l'utilizzo di graniglie che permettono maggiore profondita' e miglior dettaglio nonche' migliore resa qualitativa

### TERZO FUOCO (3F)

Angelo Ceramica comprende al suo interno la possibilita' di sviluppare elementi ceramici decorativi attraverso la tecnologia del terzo fuoco, che attraverso una ulteriore applicazione di smalti nobili e ulteriore cotture permette di ottenere decori con caratteristiche uniche di design. In questo modo i decori acquistano una propria peculiarita' distintiva in termini di profondita' dell'immagine e di ricchezza del colore





## INSTALLATION

The success of a floor is due not only to the quality of the tiles, but to a whole set of elements (substrate, bonding layer, expansion joints, etc.) that constitute a real system. This is why the laying operations are to be considered as important as the choice of tile.

However, it is up to the designer to establish the correct application method of the tiles and the type of tile to be used, depending on the structure and the intended use of the decking.

The laying can be done either with cement mortar or with adhesives or adhesives. To proceed with the installation with adhesive it is necessary before proceeding to verify that the substrate possesses suitable characteristics for bonding the ceramic such as: stability and dimensional regularity, rigidity, absence of cracks, cleaning and surface integrity, absence of excess humidity and / or contaminants.

Before starting to lay any surface it is recommended to make sure that the amount of stoneware is adequate and sufficient for the quantity, tone and size required. Very important is the verification of the material before laying to check that the material itself does not present any defects or imperfections of any kind, since once the installation has been carried out the material cannot be object of dispute if the defect was evident before laying.

Then all the rules and precautions that are at the base of a correct execution of the work must be carried out (preparation of the substrate, composition of the mortar or glues, maturation times, positioning of expansion joints, etc.)

In large rooms it is absolutely necessary to position the expansion joints regularly (following the rules valid for interiors and exteriors). In smaller rooms it will be enough to maintain a slight detachment between the tiled and the perimeter walls with the care to insert skirting boards for a suitable finish.

Avoid transit on the floor for at least 2/3 days after laying. In case of need, cover the floor properly to allow the passage without causing damage.

After laying, it is recommended to adequately protect the floor until the end of the site in order to avoid damage caused by abrasive substances or other harmful agents.

## POZA IN OPERA

La riuscita di un pavimento è dovuta non solo alla qualità delle piastrelle, ma a tutto un insieme di elementi (sottofondo, strato legante, giunti di dilatazione, ecc...) che costituiscono un vero e proprio sistema. Ecco perché le operazioni di posa sono da considerarsi importanti tanto quanto la scelta della piastrella.

E' comunque compito del progettista stabilire, in funzione della struttura e della destinazione d'uso del piano di calpestio, il corretto modo di applicazione delle piastrelle e il tipo di piastrella da utilizzare.

La posa può essere fatta sia con malta cementizia che con collanti o adesivi. Per procedere alla posa con adesivo è necessario prima di procedere, verificare che il supporto possieda idonee caratteristiche per l'incollaggio della ceramica quali: stabilità e regolarità dimensionale, rigidità, assenza di fessurazioni, pulizia e integrità superficiale, assenza di umidità in eccesso e/o di agenti contaminanti.

Prima di iniziare le operazioni di posa di una qualsiasi superficie si raccomanda di accertarsi che la partita di gres sia adeguata e sufficiente per quantità, tono e calibro a quella necessaria. Molto importante è la verifica del materiale prima della posa per verificare che il materiale stesso non presenti difetti o imperfezioni di qualsiasi natura, poiché una volta proceduta con la posa il materiale non può essere oggetto di contestazione se il difetto era evidente prima della posa.

Si dovranno poi eseguire tutte le norme e le precauzioni che sono alla base di una corretta esecuzione del lavoro (preparazione del sottofondo, composizione della malta o dei collanti, tempi di maturazione, posizionamento dei giunti di dilatazione, ecc...)

In ambienti di grandi dimensioni è assolutamente necessario posizionare i giunti di dilatazione con regolarità (seguendo le norme valide per interni ed esterni). In ambienti più ridotti basterà mantenere un leggero stacco tra il piastrellato e i muri perimetrali con l'accortezza di inserire battiscopa per una finitura idonea.

Evitare il transit sul pavimento per almeno 2/3 giorni dopo la posa. In caso di necessità coprire opportunamente con tavolato il pavimento per consentire il passaggio senza arrecare danni.

Successivamente alla posa si raccomanda di proteggere adeguatamente il pavimento sino al termine del cantiere in modo tale da evitare danni causati da sostanze abrasive o da altri agenti dannosi.

### INSTALLATION SUGGESTION PARTICULARLY FOR OUR DECORATIVE TILES

The production of Angelo Ceramica is characterized by numerous plastic solutions that change the surface of the tile so as to allow further decorations to the simple color and design. To obtain a correct installation and a suitable result, please pay attention in laying the right tile position to obtain the necessary continuity in the decoration.

Our tiles have an arrow on the back (Fig A)

that allows you to orient the tiles correctly and avoid unpleasant problems (Fig B).

Always following the direction of the arrow, the elements with structure will then be properly laid as shown in the (Fig C)

### CONSIGLI DI POSA PER DECORI E PRODOTTI DECORATIVI

La produzione di Angelo Ceramica si caratterizza di numerose soluzioni plastiche che vanno a modificare la superficie della piastrella in modo da permettere decorazioni ulteriori al semplice colore e disegno. Per ottenere una posa corretta ed un risultato idoneo prego prestare attenzione nella posa della giusta posizione della piastrella per ottenere la continuità necessaria nel decoro.

Le piastrelle hanno sul retro una freccia che permette di orientare le piastrelle nel modo corretto ed evitare quindi spiacevoli inconvenienti.

Seguendo sempre la direzione della freccia, gli elementi con struttura saranno quindi posati idoneamente come illustrato nelle foto/figure



figure A



figure B

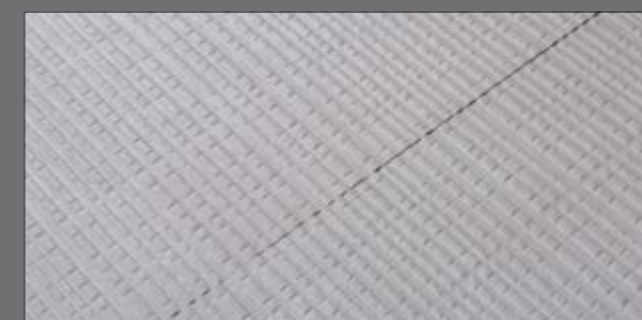


figure C





## CLEANING TIPS

### FIRST CLEANING

Its purpose is to eliminate all traces of grouting resulting from the closure of joints or joints. It is performed only once and before the use of the floor and must be performed after laying and before using the flooring.

1. sweep and clean the floor from any coarse dirt.
2. moisten the surface with water so that the joints are soaked with water so as to better protect them from the corrosive action of the acid component detergent.
3. spread the acid-based detergent on the surface diluted in the appropriate proportion with the water. Prevent the detergent from coming into contact with steel, aluminum or natural marble parts adjacent to the tiled floor.
4. let the detergent act for a suitable time in relation to the state of the floor and at the same time rub the most resistant dirt)
5. rinse thoroughly with water and immediately collect dirty water.

If the first cleaning is performed after the floor has already been used, then before carrying out the first cleaning, then it is necessary to remove with appropriate alkaline detergents (degreasers) any existences of fatty substances or the like). In case the cleaning operation can be repeated.

### NON-SLIP SURFACES

This type of rough or textured surface is more difficult to clean. After the tiles have been grouted, it is important to remove all excess material as soon as possible and to wash the surfaces repeatedly with a sponge and water until the tiniest residue has been eliminated.

After this, the surface can be cleaned with a single-brush cleaner and relative discs.

### DAILY CLEANING

Always use a neutral detergent (that does not contain wax and will not deposit a glossy patina) diluted in hot water for the daily cleaning.

operations and comply with the instructions on the package.

## CONSIGLI PER LA PULIZIA

### PRIMA PULIZIA

Ha lo scopo di eliminare ogni traccia di stuccatura conseguente alla chiusura dei giunti o fughe. Si esegue una sola volta e prima dell'utilizzo del pavimento e deve essere obbligatoriamente eseguita dopo la posa in opera e prima dell'uso della pavimentazione.

1. spazzare e pulire il pavimento da ogni eventuale sporco grossolano
2. inumidire con acqua la superficie affinché le fughe vengano impregnate di acqua in modo da proteggerle meglio dall'azione corrosiva del detergente a componente acida
3. stendere il detergente a base acida sulla superficie diluito nella idonea proporzione con l'acqua (generalmente il rapporto 1 a 5 è consigliato). Evitare che il detergente venga a contatto con parti di acciaio, alluminio o marmo naturale adiacenti al pavimento piastrellato.
4. lasciare agire il detergente per un tempo idoneo in relazione allo stato del pavimento e nel contempo strofinare lo sporco più resistente)
5. sciacquare abbondantemente con acqua e raccogliere subito l'acqua sporca.

Se la prima pulizia viene eseguita dopo che il pavimento è già stato utilizzato, allora prima di effettuare la prima pulizia, allora è necessario rimuovere con appositi detersivi alcalini (sgrassanti) eventuali esistenze di sostanze grasse o simili). In caso l'operazione di pulizia può essere ripetuta.

### SUPERFICI ANTISCIVOLO

Questi tipi di superfici, ruvide o strutturate, si puliscono più laboriosamente. È importante dopo la stuccatura togliere tutti gli eccessi in breve tempo e con frequenti lavaggi usando spugna e acqua fino a rimuovere ogni minimo residuo. In seguito o fare lavaggio utilizzando monospazzola con dischi.

### PULIZIA QUOTIDIANA

Effettuare le pulizie quotidiane sempre con detersivi neutri (che non contengono cere o non depositano patine lucide) diluiti in acqua calda, seguendo le indicazioni riportate sulle confezioni.





**Italy Main Office**

Via Ciro Menotti, 77, 41049 Sassuolo (MO) Italy  
Telephone: +39 0536 800661, Telefax: +39 0536 806764

**Iran Main Office**

Unit 204, No.5, Golkhaneh Rd, Nelson Mandella Blvd, Tehran, Iran.  
Zip Code: 1915843666  
Telephone: +9821 22015382, +9821 22046884, +982122043744

[www.angeloceramica.com](http://www.angeloceramica.com)

[www.instagram.com/angeloceramica.it](http://www.instagram.com/angeloceramica.it)

